



ELEMENTS

BROCHURE



ELEMENTS



CITY CENTER

Set apart from the lower town and main tourist area, this historic old quarter offers a more laid-back vibe as well as several cultural attractions.

Although it is just 2 miles (3 kilometers) from the main seafront tourist area, Paphos City Center or Ktima as it is known locally, feels a world away. Take a stroll around this charming and laid-back part of town to see elegant, colonial-era constructions and the modern commercial center of town.

Ktima is the perfect antidote for people looking to escape the busier, livelier and more tourist-heavy district of Kato Paphos or Lower Paphos. Wander around the city center bars and traditional restaurants. Pause for a coffee in a café with a harbor view.

While you're here, browse the edible goods on offer at the municipal market. The "agora" as the locals call it is where Paphos residents go to shop for groceries.

With its many narrow lanes and its relatively small size, Paphos City Center is best explored on foot. If you don't want to walk uphill to get here, ride a local bus from the harbor instead.



ELEMENTS

A residence built within the famous Park of Colors in the center of Paphos. The park of 32000m² will comprise of sporting grounds, a children's playground and a botanical garden. a cafeteria, a basketball court, a small football court, locker rooms, a climbing wall, a skatepark and an outdoor exhibition space.

The park will be the largest in Paphos and one of the largest on the island.

Elements delights of unobstructed views across lower Pafos to the sea. This is city living at its best, easy walking distance to the old town and its narrow streets overflowing with shops, coffee shops, bars and restaurants. Easy access to Pafos commercial district, nightlife, the famous Hammam Baths, Pafos Mall and on the city's bus route. ELEMENTS Residence is the perfect location from which to enjoy and explore the very best that Pafos has to offer. Perfect for a city base or for investment with excellent rental opportunities.

The projects consists of 4 building 8 levels each, available options for 1,2 & 3 bedroom apartments. Each apartment has a spacious bedroom, living room and open plan kitchen, as well as mesmerizing panoramic views of the sea and cityscapes.









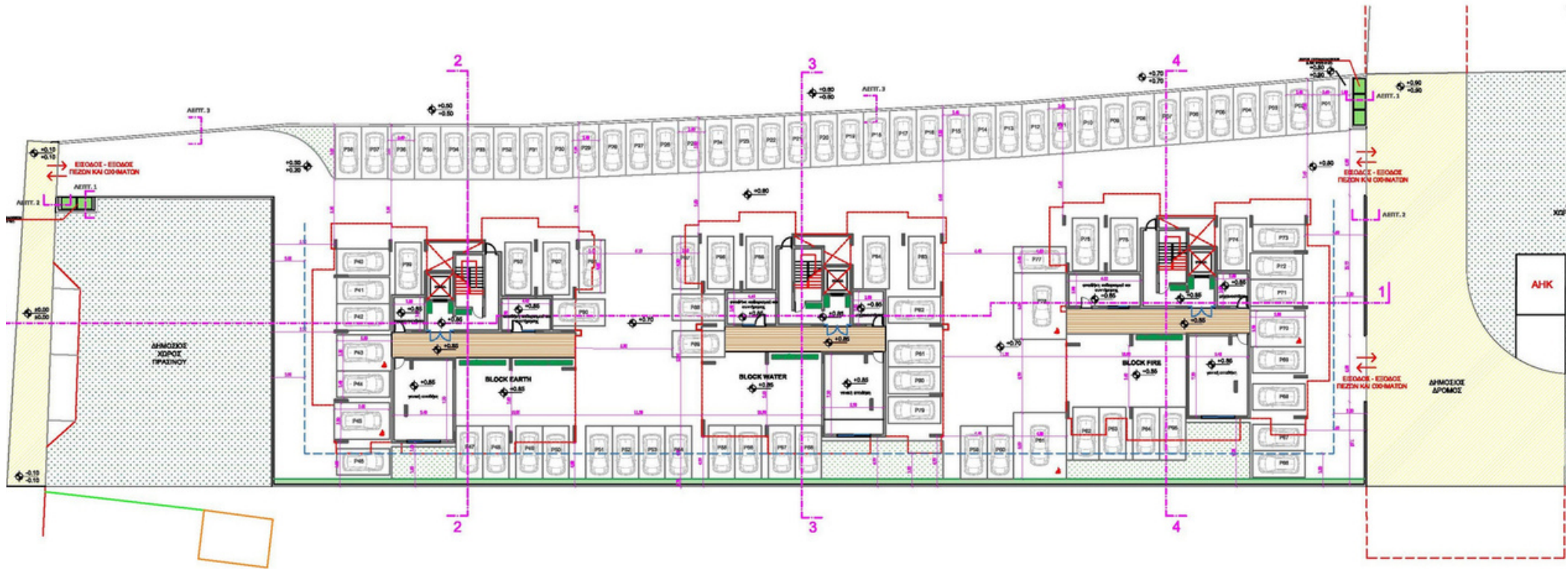




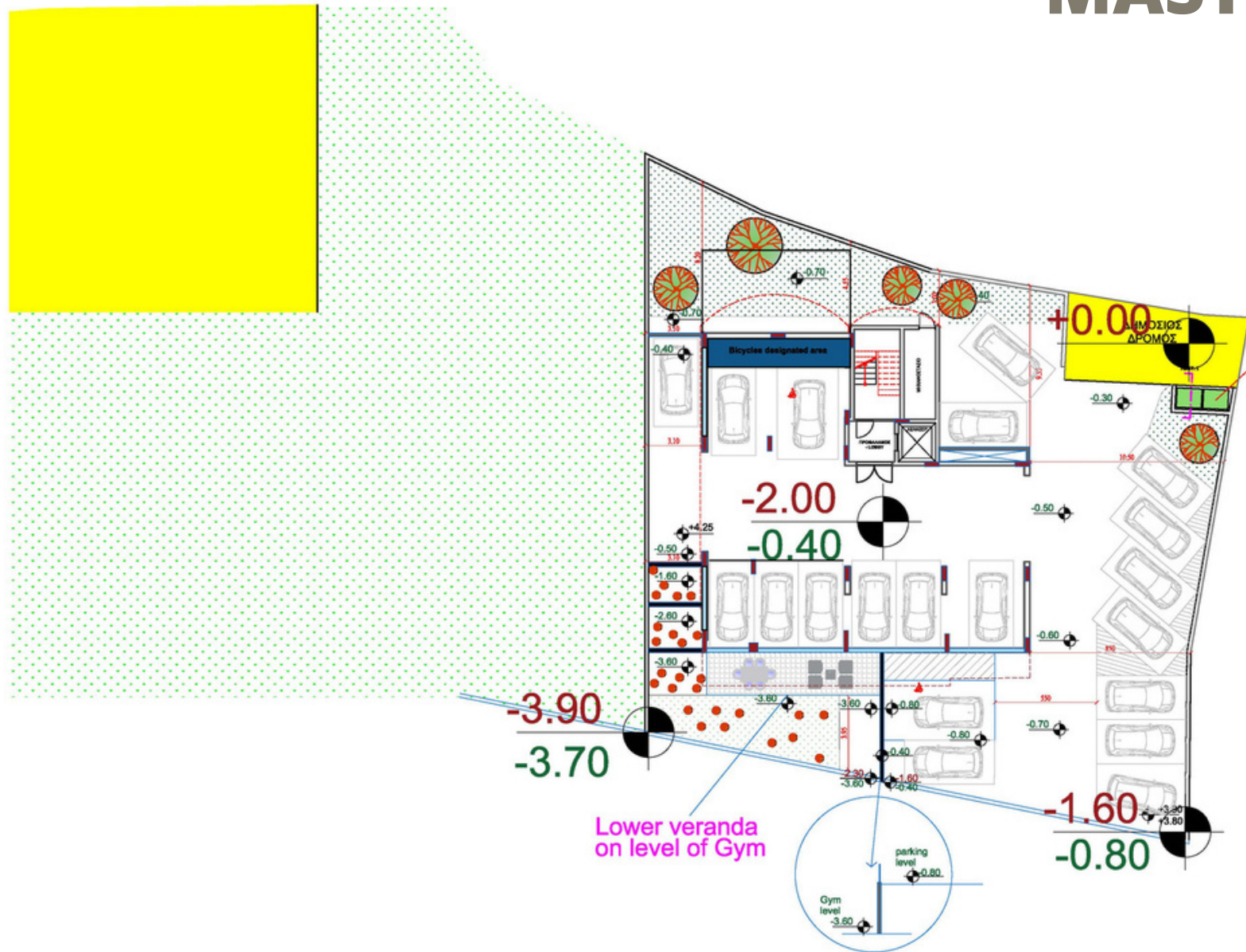




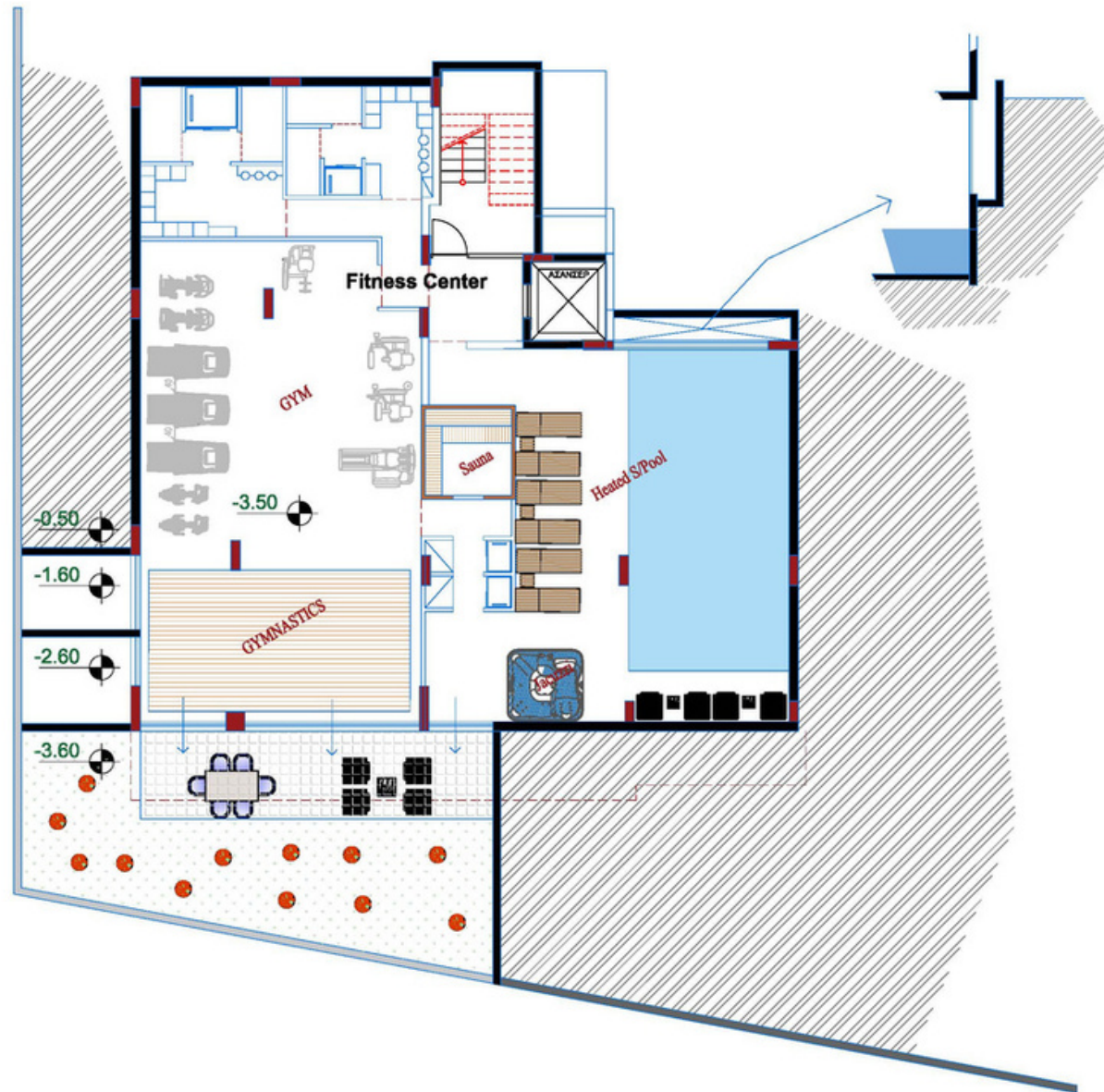
MASTER PLAN



MASTER PLAN



AMENITIES



FLOOR PLAN

FLOORS 1-4

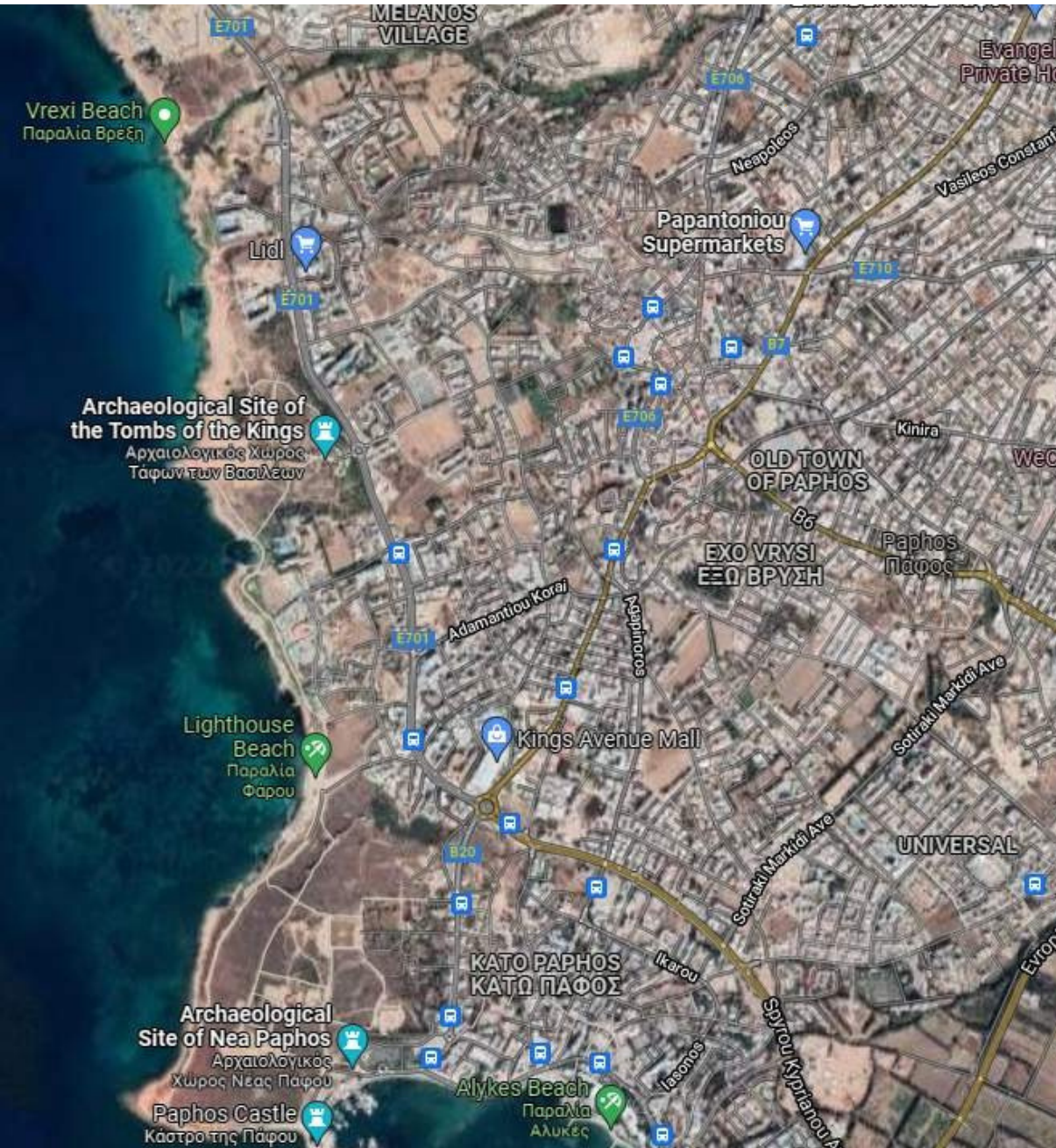


FLOOR PLAN

FLOORS 5-6



LOCATION



CITY CENTER
0m

BEACH
3KM

AIRPORT
10KM

RESTAURANT
200m

SUPERMARKET
100m

SCHOOL
100m

GOLF COURSE
5KM

ELEMENTS

SPECIFIC ATIONS

- *1, 2, 3 Bedroom Apartments*
- *Contemporary Architectural Design*
- *Upgraded thermal aluminium series*
- *Tailor made kitchen design*
- *Wide range of imported ceramic tiles and marbles*
- *Branded sanitary ware*
- *Concealed A/C*
- *Electrical Underfloor Heating*
- *Energy saving designed property*
- *Interior design consultation*
- *Gated Parking area*
- *Security System*
- *Smart Lighting System*
- *Video Door / Intercom*
- *Indoor Pool*
- *Gym*
- *Sauna*
- *Changing Rooms*
- *Solar Panels for common area expenses*
- *Designated are for Bicycle Storage*