



TALA ELITE



01

TALA

The village of Tala is situated 7 km North of Paphos Town Center within a magical natural environment and with stunning sea views.

The boundaries of Tala village is connected with five different communities - Emba, Kissonerga, Tremithousa, Tsada and Koili.

Additionally, the Coral Bay Beach is only 10 minutes drive away and the International Airport of Paphos is within 20 minutes drive.

Moreover, the community is divided in 4 main locations where is the Stefani Area, Lofos Area, Kamares Area and Melissovous Area.

Tala, is one of the most well maintained communities of Paphos city where retains a lovely character.

The main property types where existed in the community are detached houses/villas and there are some complex of apartments in the central / lower part of the village.



02

TALA ELITE

This prestigious development consists of just five, 2-story villas with prime investment potential. The development is located in one of the most sought after locations in Paphos, Tala. The properties delight in sea and mountain views offering 3-4 bedroom villas with open living spaces and relaxing sun terraces.

As a market driven company we couldn't of not included parking space, roof garden with panoramic views, stone and wooden finishes into our design, swimming pool is optional. Elite 2 is located just 9 minutes from Pafos center, Tala golf course and the beach and 4 minutes to the village center, this is the ideal location for young couples, families investment or to live permanently.

















PUBLIC GREEN
AREA 511m²

PUBLIC ROAD

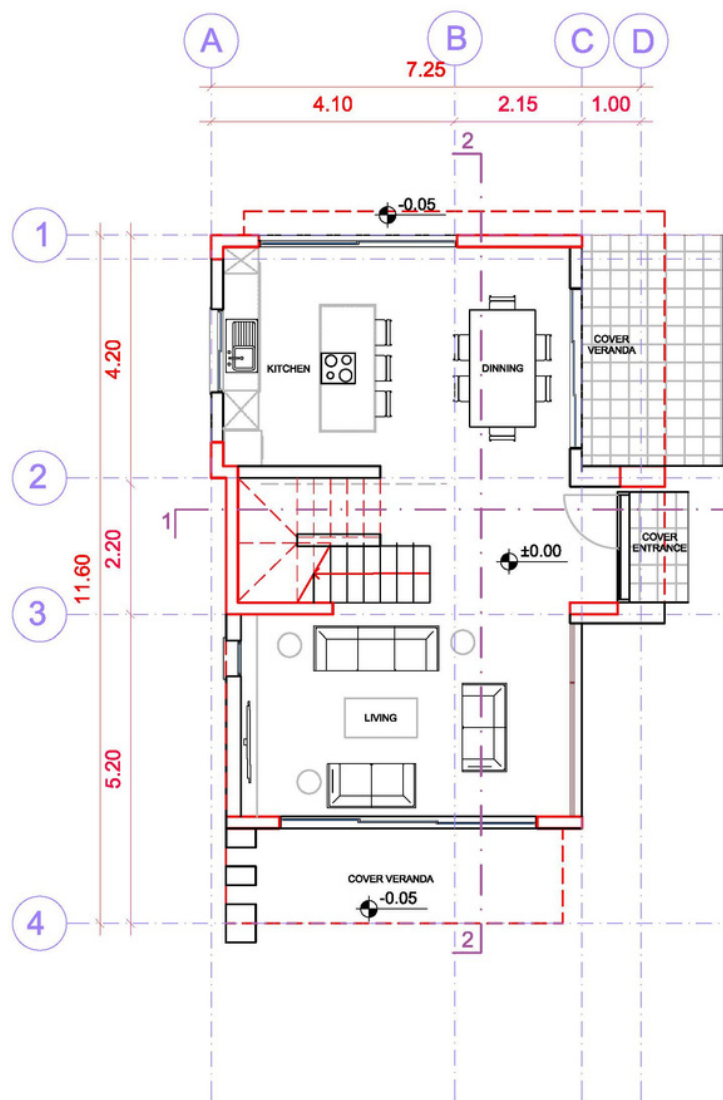
private trash bin

private trash bin

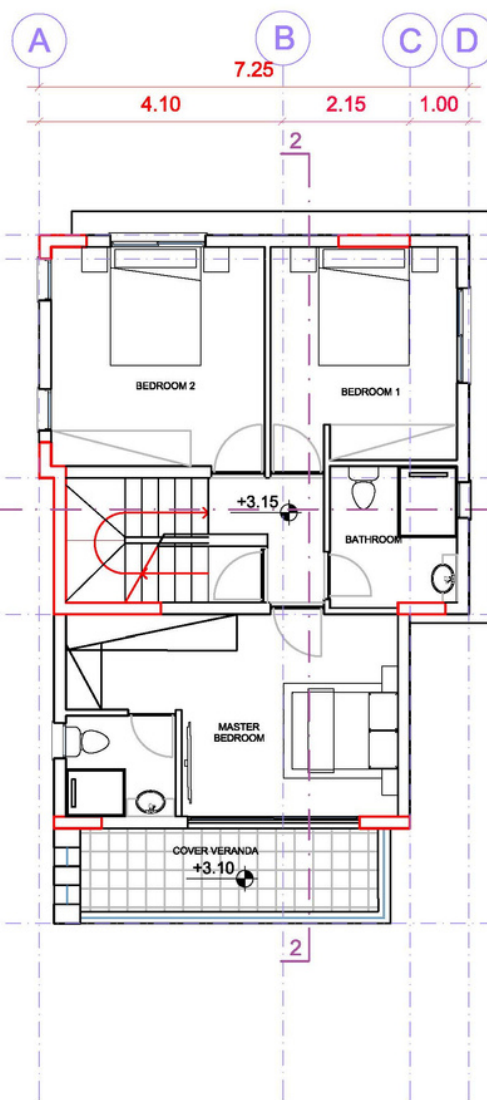


BLIC GREEN
AREA 511m²

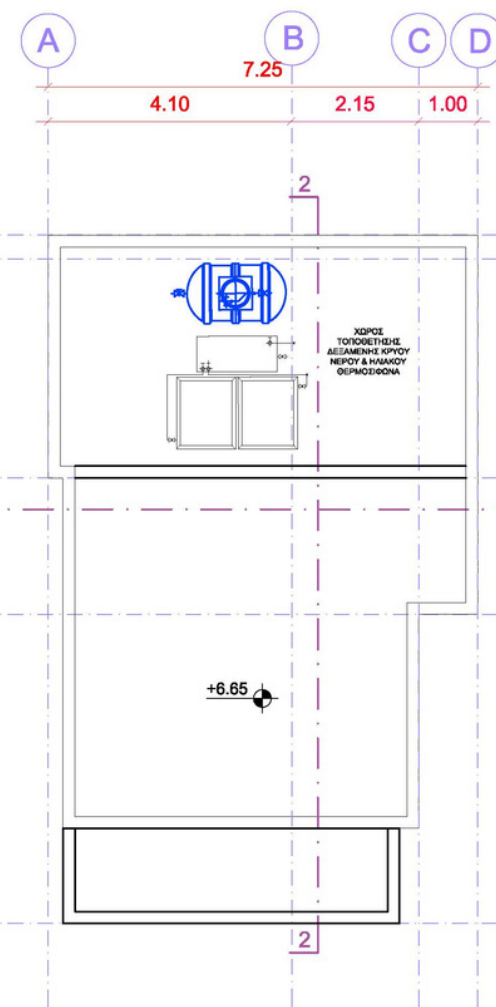




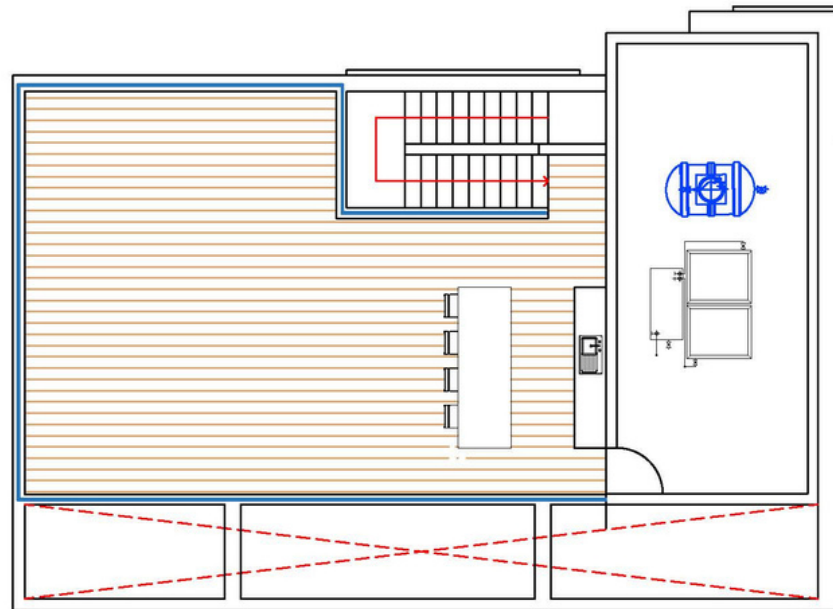
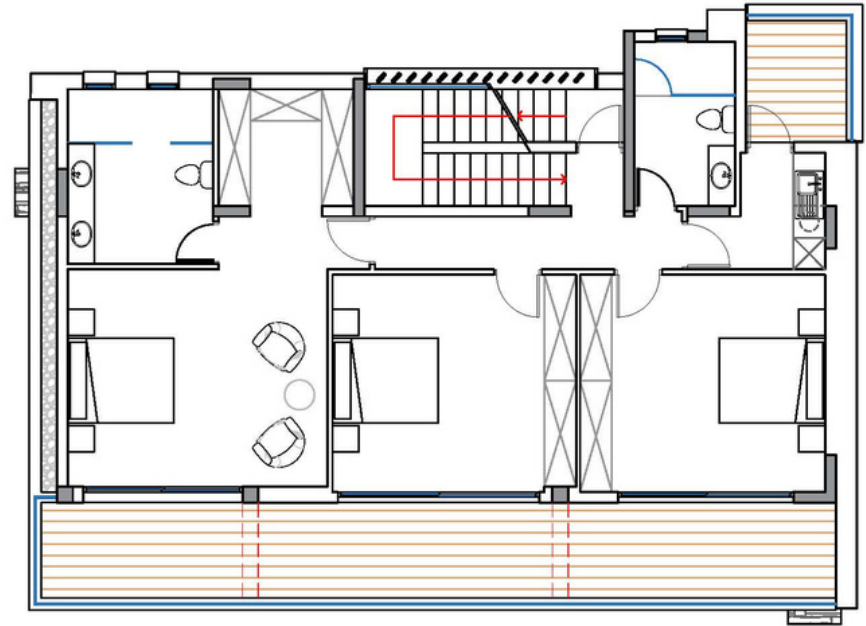
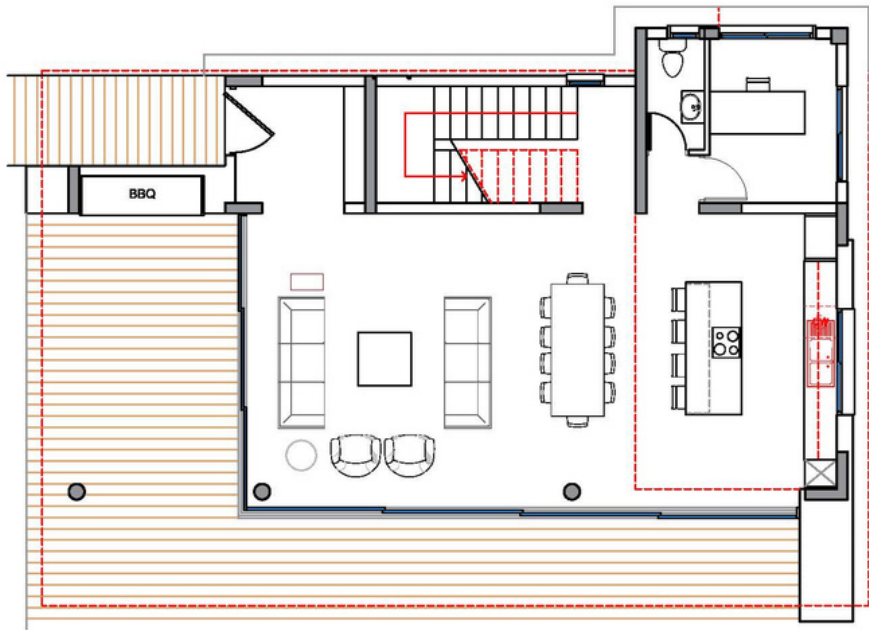
GROUND FLOOR



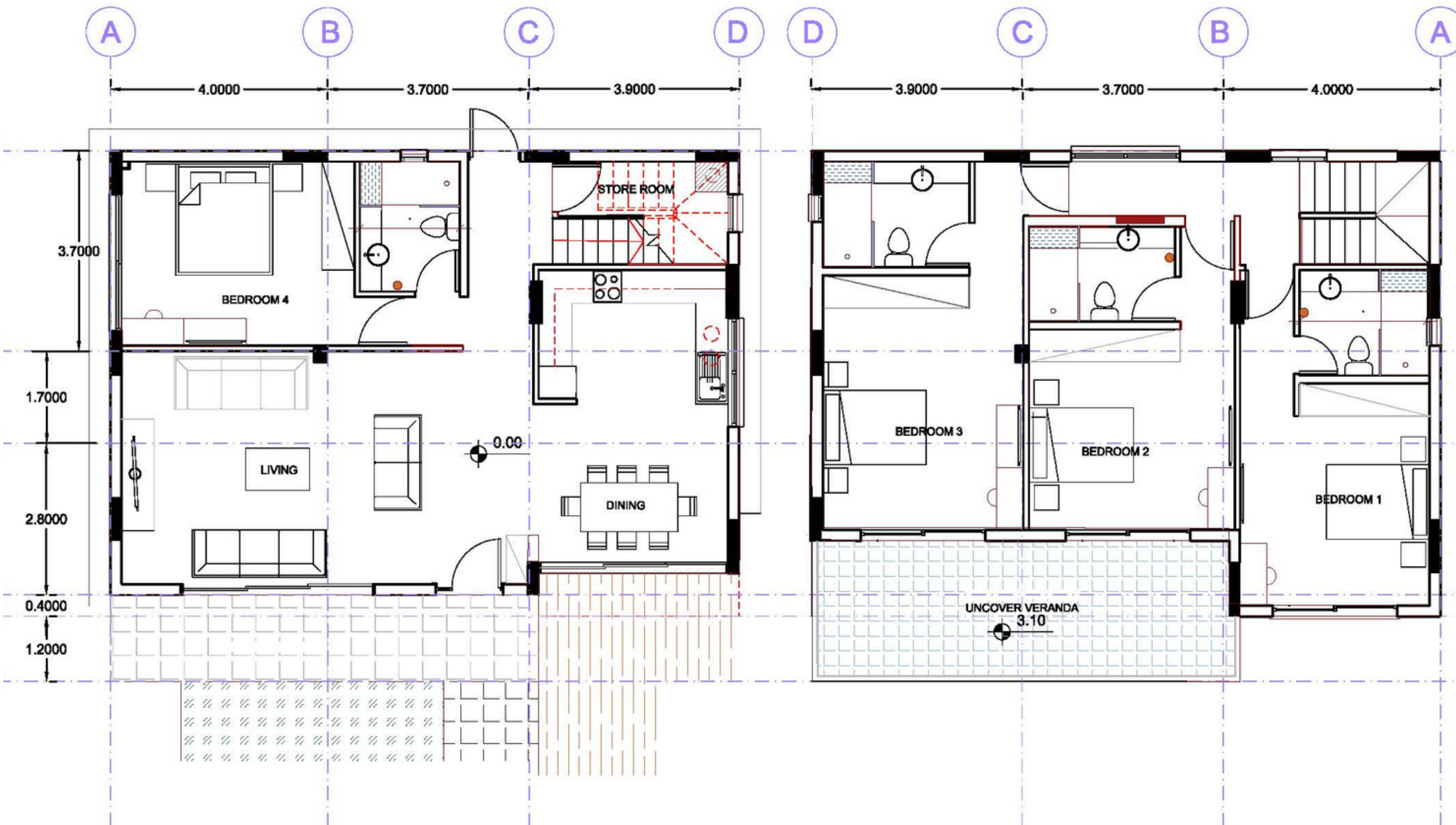
FIRST FLOOR



ROOF PLAN



Option 1



GROUND FLOOR

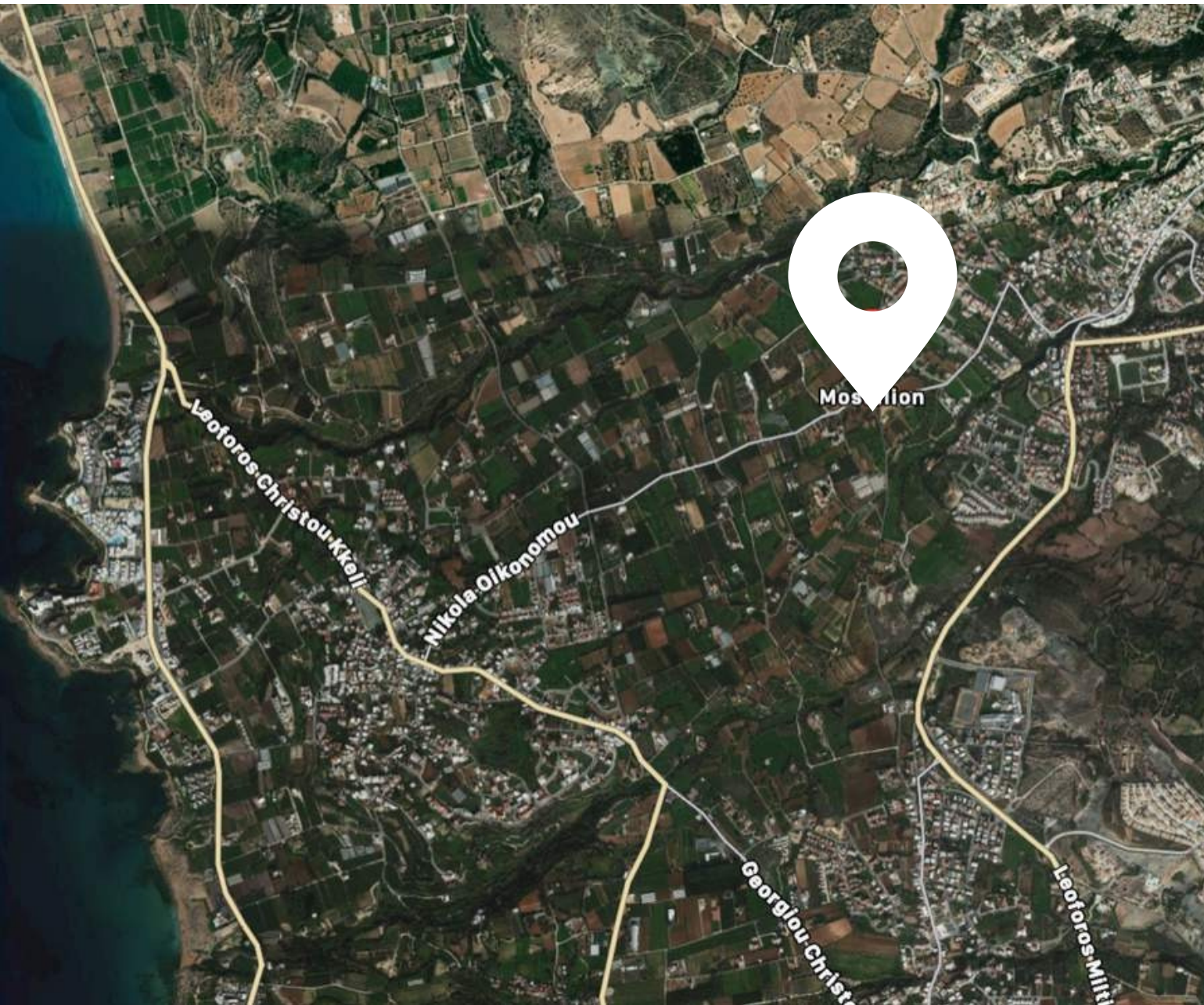
FIRST FLOOR

Option 2





LOCATION



CITY CENTER
1KM



BEACH
5KM



AIRPORT
15KM



RESTAURANT
2KM



SUPERMARKET
5KM



SCHOOL
7KM



GOLF COURSE
10KM



TALA ELITE



SPECIFIC ATIONS

- *4 Bedrooms*
- *Contemporary Architectural Design*
- *Upgraded thermal aluminium series*
- *Tailor made kitchen design*
- *Wide range of imported ceramic tiles and marbles*
- *Branded sanitary ware*
- *Provisions for central heating and A/C*
- *Generous plots*
- *Detached properties*
- *Unobstructed Sea View*
- *Energy saving designed property*
- *Optional roof garden with BBQ facilities*
- *Optional swimming pool*