

# EAGLE'S VIEW



# TALA

The village of Tala is situated 7 km North of Paphos Town Center within a magical natural environment and with stunning sea views.

The boundaries of Tala village is connected with five different communities - Emba, Kissonerga, Tremithousa, Tsada and Koili.

Additionally, the Coral Bay Beach is only 10 minutes drive away and the International Airport of Paphos is within 20 minutes drive.

Moreover, the community is divided in 4 main locations where is the Stefani Area, Lofos Area, Kamares Area and Melissovous Area.

Tala, is one of the most well maintained communities of Paphos city where retains a lovely character.

The main property types where existed in the community are detached houses/villas and there are some complex of apartments in the central / lower part of the village.



# EAGLE'S VIEW

A prestigious and elite development consisting of just six, 2-story villas, offering panoramic sea views of Pafos and Peyia Bay.

The development is located in one of the most sought after locations in Pafos, Tala. The properties consist of spacious interior areas and are designed to maximise the breath-taking sea and mountain views surrounding the project from all internal areas.

There are options for 3 and 4 bedroom villas, designed using modern architectural lines, while using locally sourced materials to blend in with the natural environment.

Located just 9 minutes from Pafos center, Tala golf course and the beach and just 4 minutes to the village center, Eagle's View this is the ideal location for investment or to live permanently.

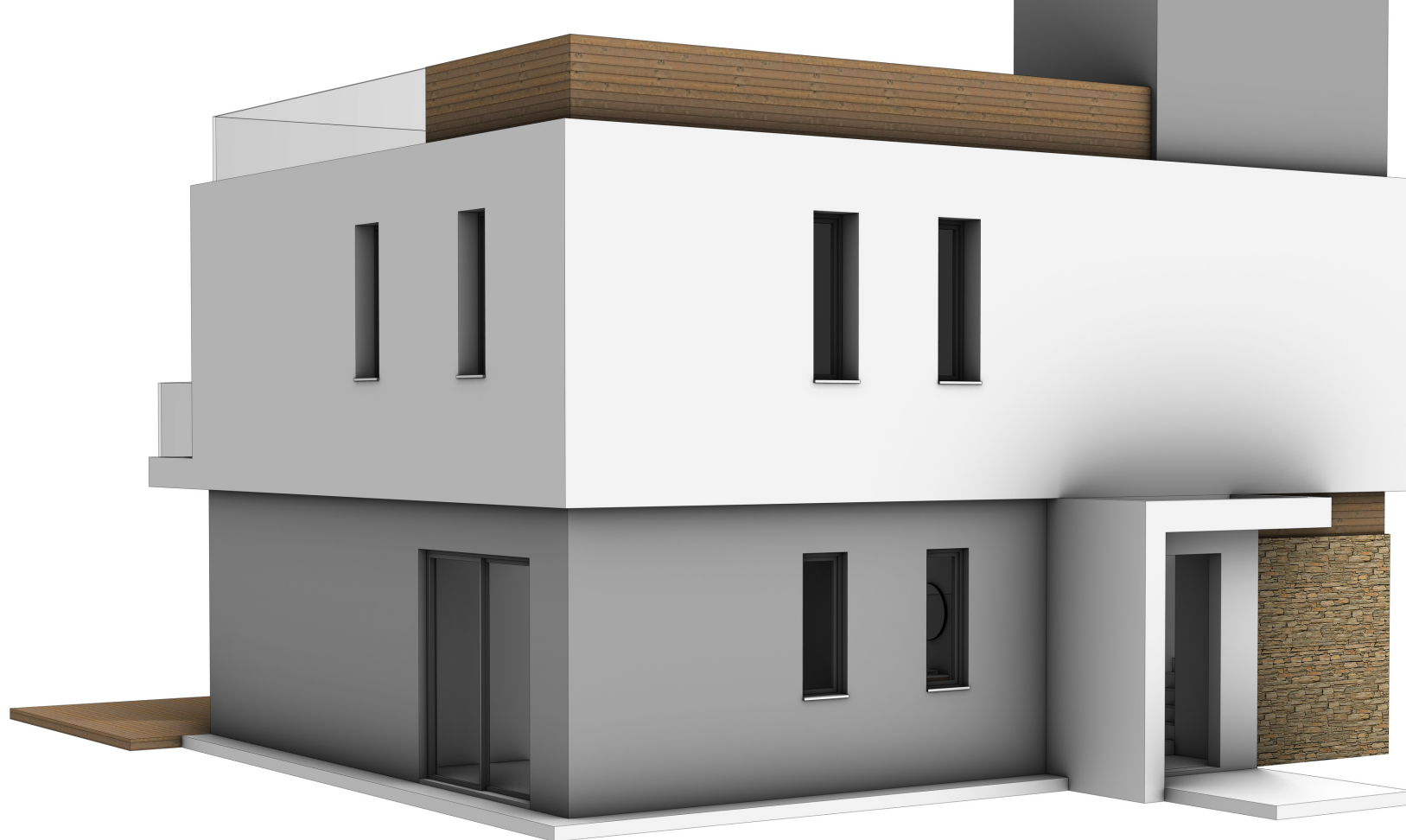






# House 1,3,5





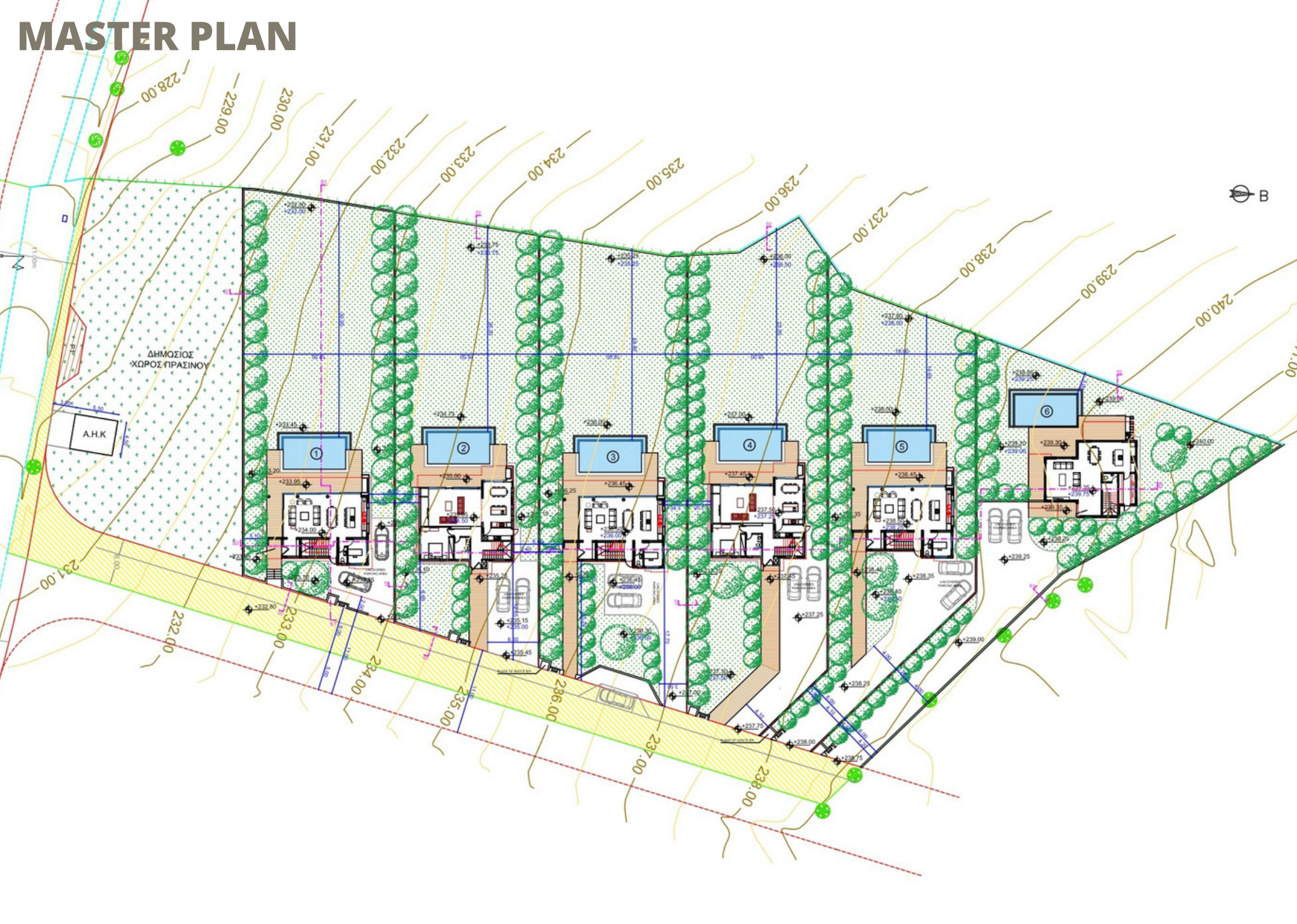
**House 2,4**



**House 2,4**



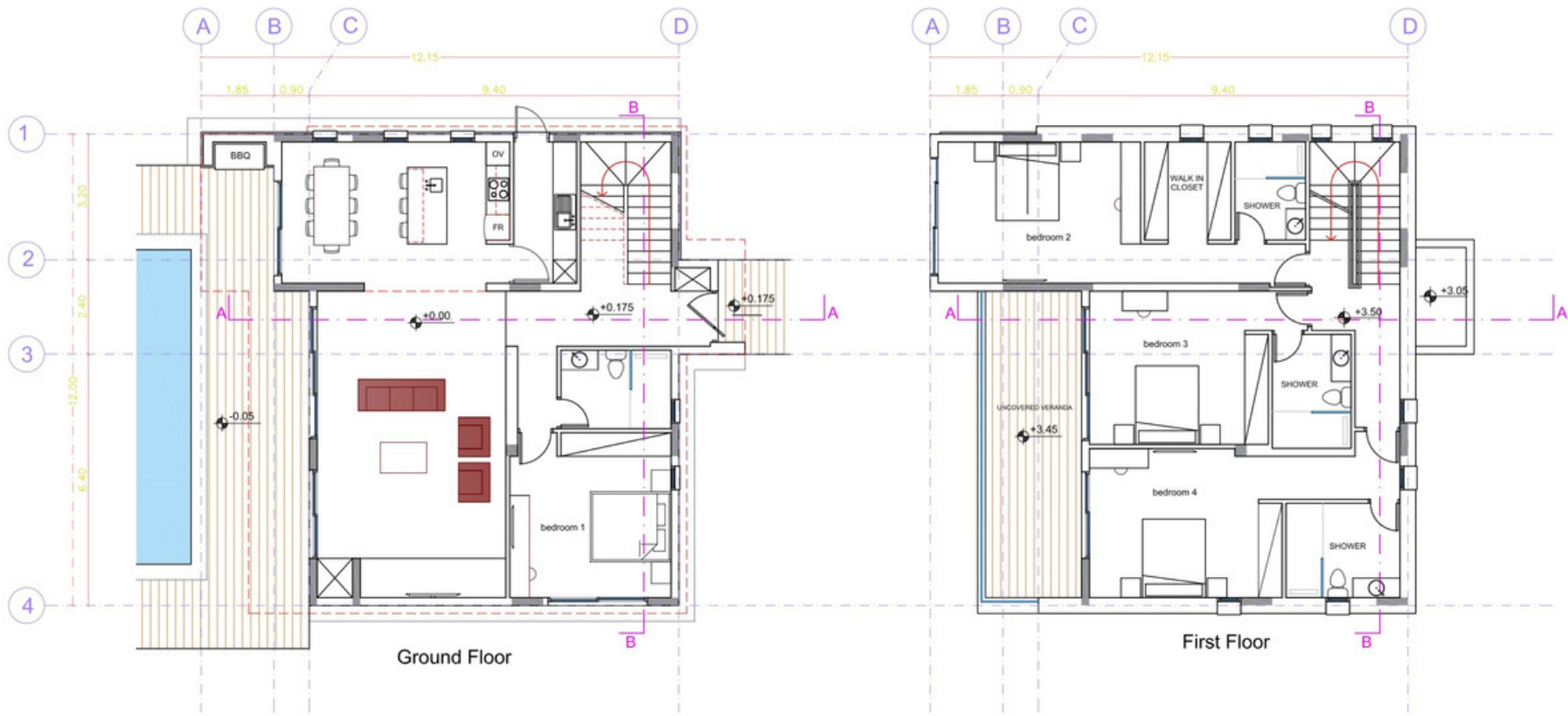
# MASTER PLAN



# FLOOR PLAN

House 2,4

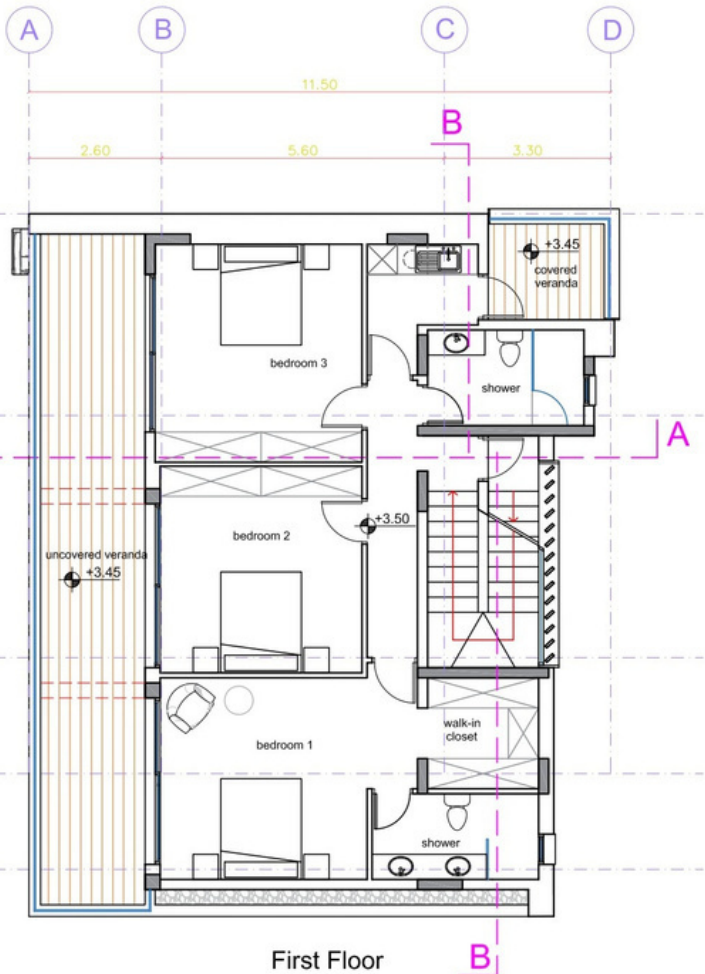
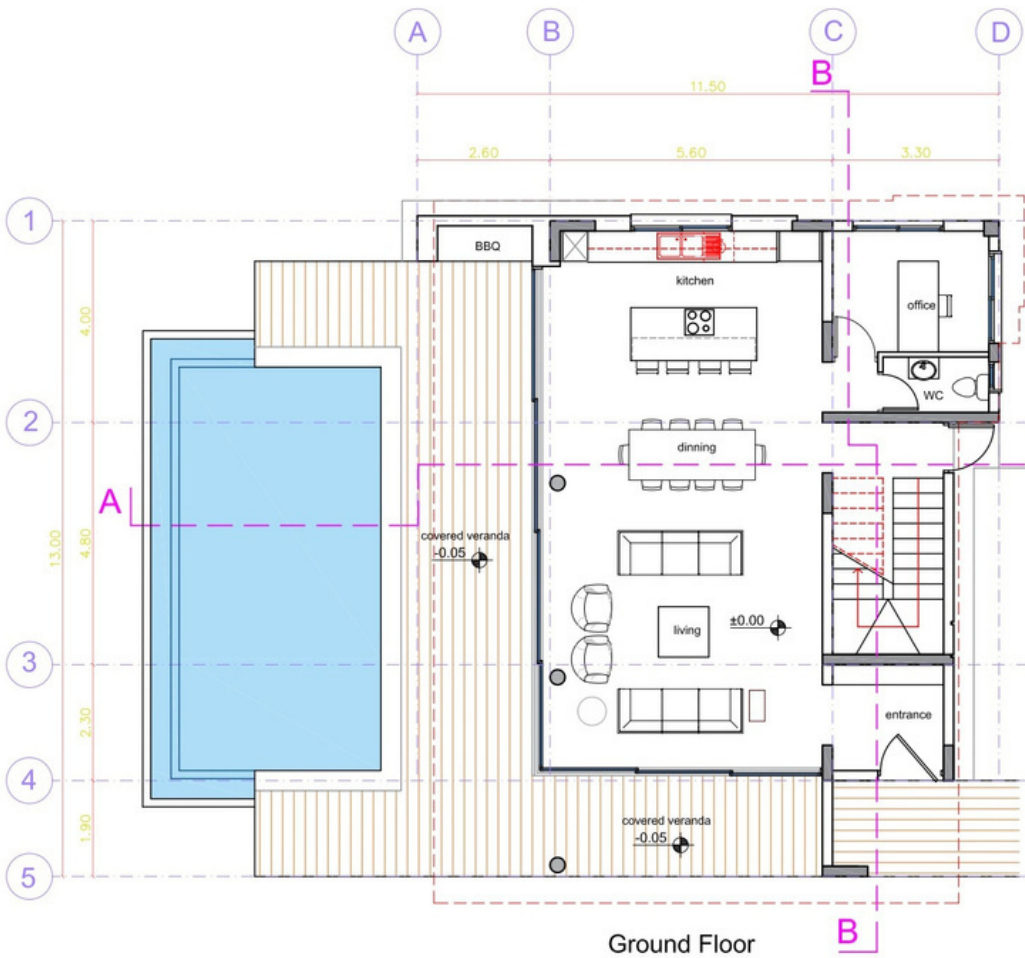
HOUSE 2\_0.00 = +235.05



# FLOOR PLAN

House 1, 3, 5

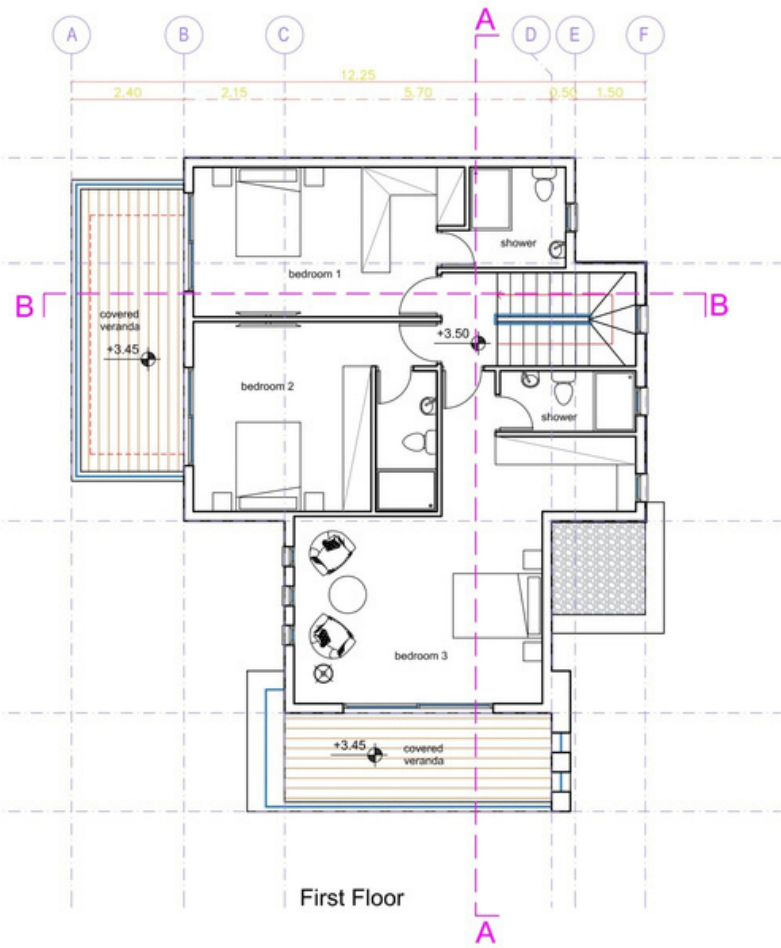
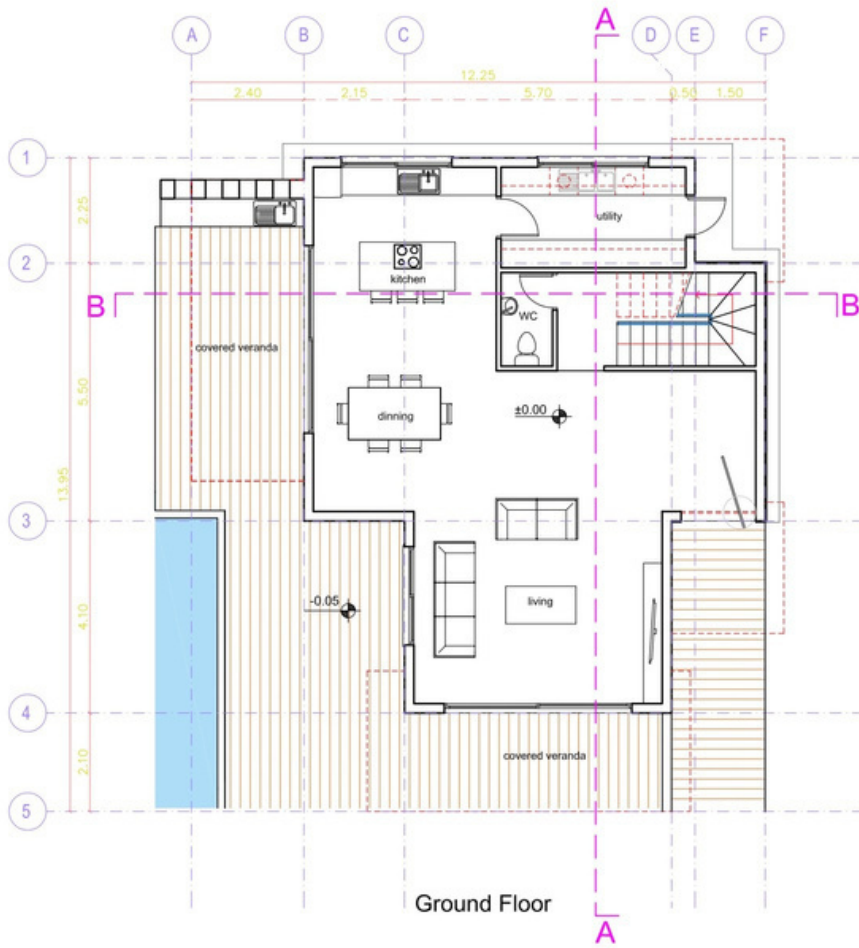
HOUSE 1\_0.00 = +234.00



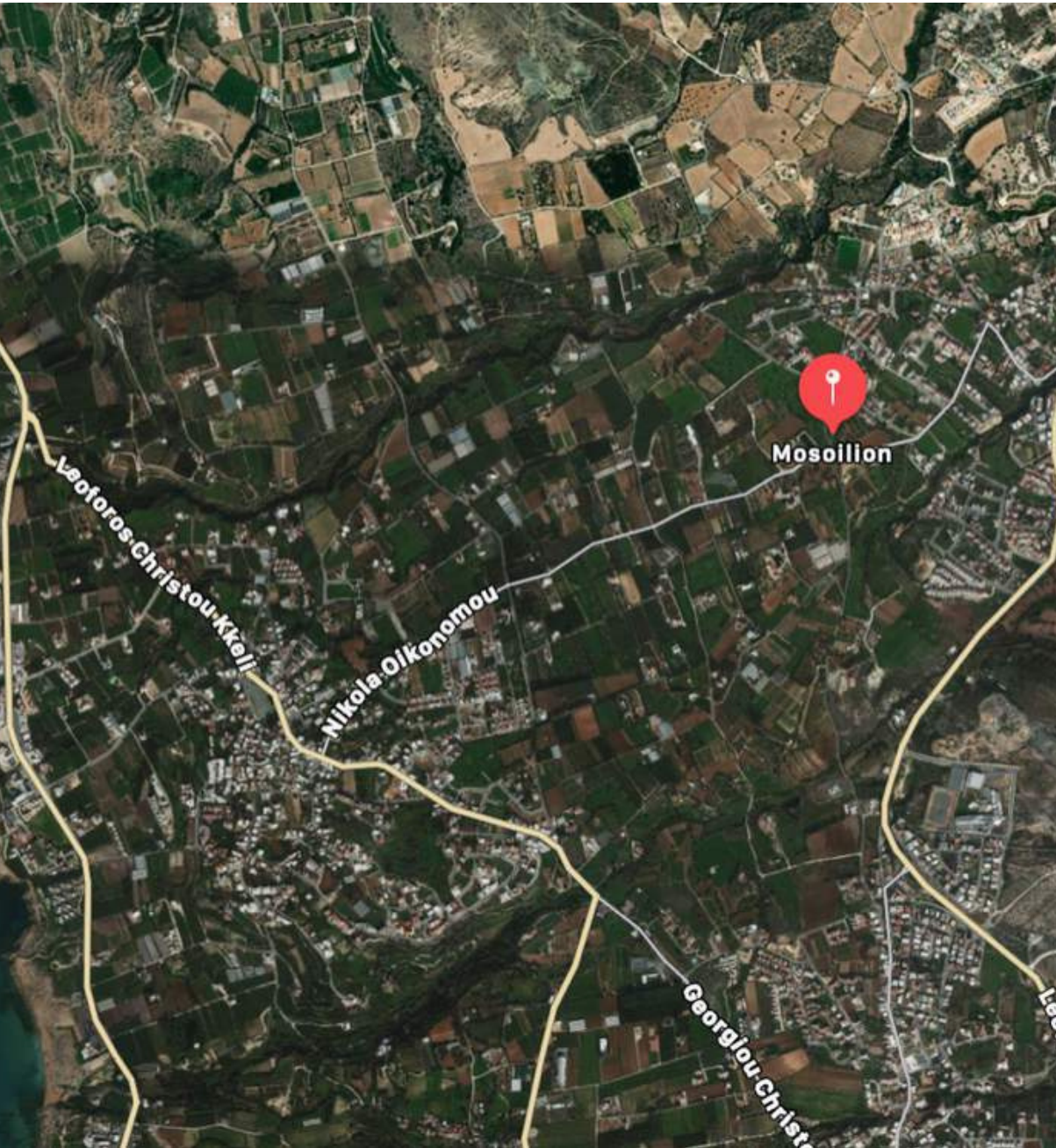
# FLOOR PLAN

House 6

HOUSE 6\_0.00 = +239.35



# LOCATION



CITY CENTER  
1KM



BEACH  
5KM



AIRPORT  
15KM



RESTAURANT  
2KM



SUPERMARKET  
5KM



SCHOOL  
7KM



GOLF COURSE  
10KM

A modern kitchen interior featuring a curved island with a dark countertop and a white base. Two high-backed bar stools with grey fabric seats and black legs are positioned at the island. In the foreground, a light-colored wooden dining table is partially visible with a black bowl on it. The background shows a large window with a black frame, a white wall with a marble backsplash, and a white shelf with jars. The text 'EAGLE'S VIEW' is overlaid in white serif font.

# EAGLE'S VIEW

## SPECIFIC ACTIONS

- *3 -4 Bedroom Villas*
- *Contemporary Architectural Design*
- *Upgraded thermal aluminium series*
- *Tailor made kitchen design*
- *Wide range of imported ceramic tiles and marbles*
- *Branded sanitary ware*
- *Provisions for central heating and A/C*
- *Generous plots*
- *Detached properties*
- *Unobstructed Sea View*
- *Energy saving designed property*
- *Overflowing Swimming pool*