



KISSONERGA

Kissonerga Village is situated west of the Paphos district three kilometres from the town. It is built at an average altitude of about 70metres from the sea. More specifically it is located in a valley with a view towards the horizon which is lost in the Mediterranean Sea. The village nrighbours with the communities of Emba, Lemba and Chloraka. It is a place with beautiful beaches and intense opposites. With old and modern buildings, natural environment and culture which combines Greece, Europe and Middle East with hotels, restaurants , bars , coffee shops as well as hospitable residents.",



SUNSET VILLAS

A lavish and captivating project located in the beautiful village of Kissonerga, just 5 minutes' walk to the beach. The unique landscape of this ex vineyard land offers to its residents breath-taking unobstructed sea views from each and every corner of the project.

"Sunset Villas" comprises of bungalows and 2-storey villas in large plots, with optional roof garden and swimming pool. Restaurants, pubs, beach bars and 5-star hotels are within 2 minutes' drive from the project. Enjoy amazing sunsets over the Mediterranean from the comfort of your gardens.

















SITEPLAN



FLOOR PLAN

BUNGALOW



FLOOR PLAN

House 5-15



GROUND FLOOR

FLOOR PLAN

House 5-15



1st FLOOR

FLOOR PLAN

House 1-4

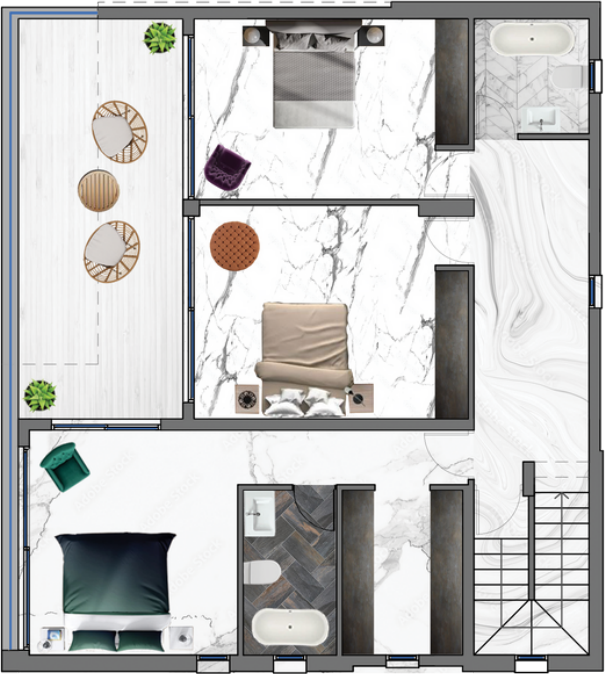


FLOOR PLAN

House 5-15

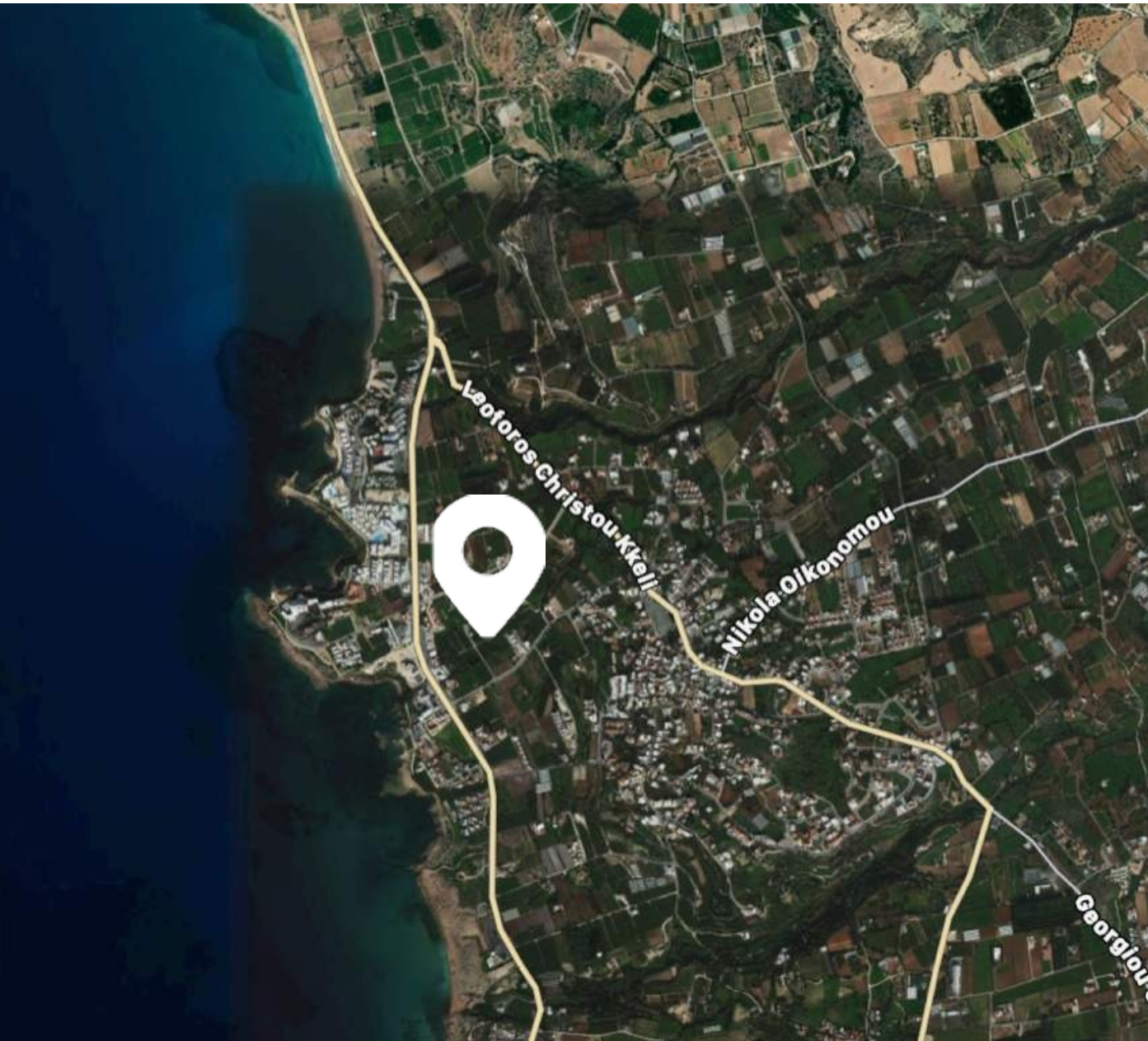


GROUND FLOOR



FIRST FLOOR

LOCATION



CITY CENTER
3KM



BEACH
200m



AIRPORT
15KM
RESTAURANT
500m



SUPERMARKET
1KM



SCHOOL
2KM



GOLF COURSE
100m

SUNSET VILLAS



SPECIFICATIONS

- *3- 4 Bedrooms*
- *Contemporary Architectural Design*
- *Upgraded thermal aluminium series*
- *Tailor made kitchen design*
- *Wide range of imported ceramic tiles and marbles*
- *Branded sanitary ware*
- *Provisions for central heating and A/C*
- *Energy saving designed property*
- *Optional Roof Garden & Swimming Pool*

