

KONIA PANTHEA



KONIA

Konia is a traditional village with an immense view, from where one can enjoy gazing all the way to the city of Pafos with ease as the village is located only a few kilometers away from Paphos Town city centre. Built upon a mountainside and at a beautiful venue, today it is a place that both locals and foreigners embrace. In this community some villas and new houses have started to pop up and - generally - the way of living has started to change in the once quiet place.

Konia has something special. It is a village inviting for those who seek rest, calmness, and serenity. The same absolute quietness and calmness also prevails during the night. You feel that your body is penetrated by a soft, refreshing breeze. You are able to enjoy a crystal clear sky filled with stars that emit their dim light towards you.

This unrivaled beauty and serenity, this unsurpassed harmony in light and color that you come across here, in the village's mountainside, is something rare. It is probably one of the calmest places in Cyprus



KONIA PANTHEA

A prestigious development consisting of 3 luxury villas, located in the quiet, peaceful, and upscale residential area of Konia in Pafos.

The modern architectural design of the houses blends seamlessly the structure with the natural surrounding and provide a harmonious access between the interior and exterior areas, maximising the usable space.

With the plot offering unobstructed sea-views and being located just a 10-minute drive from the sea, a 4-minute drive to the highway connecting Pafos to Limassol and at close proximity to Pafos' picturesque countryside, 'Konia Panthea' is ideal for permanent living.



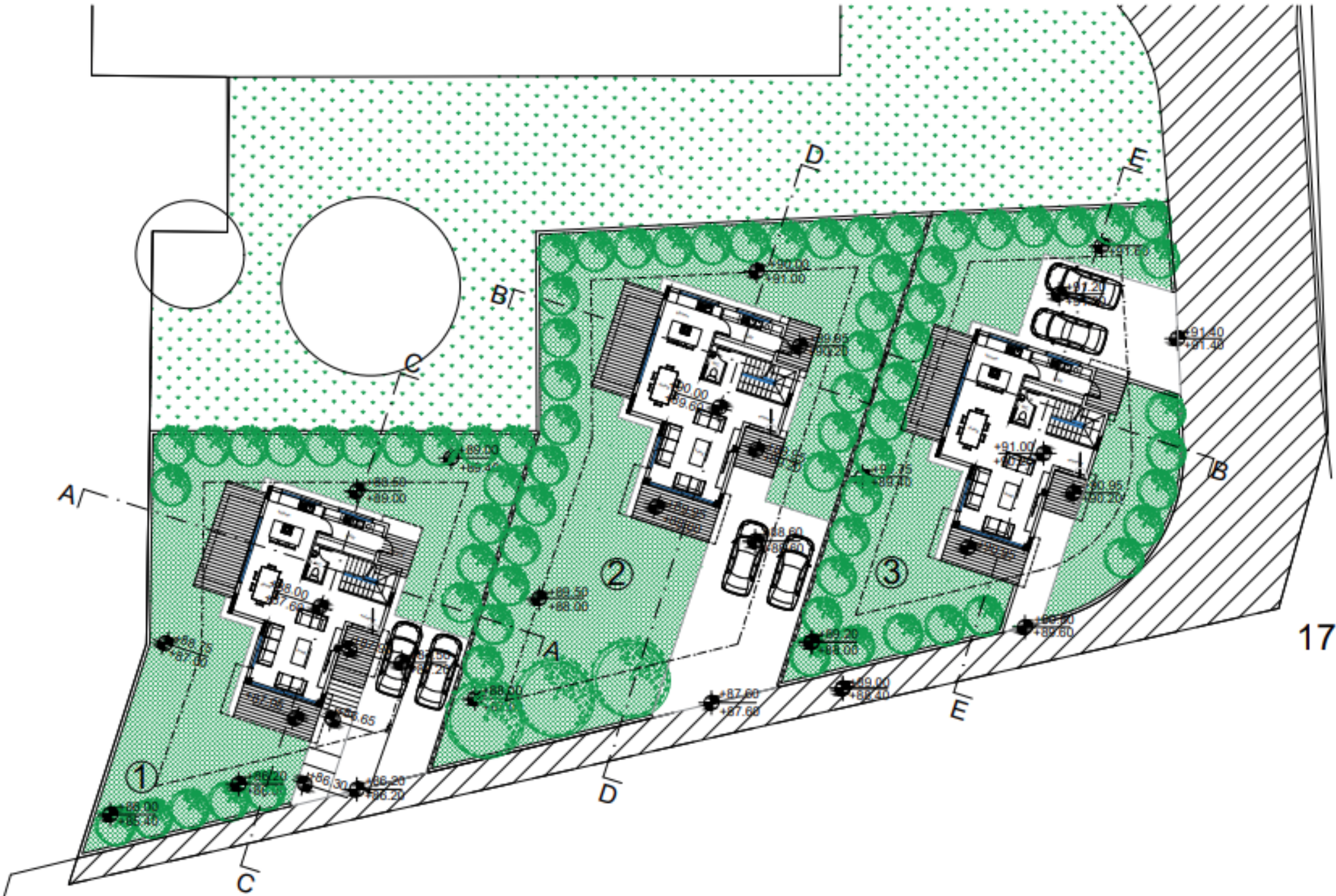






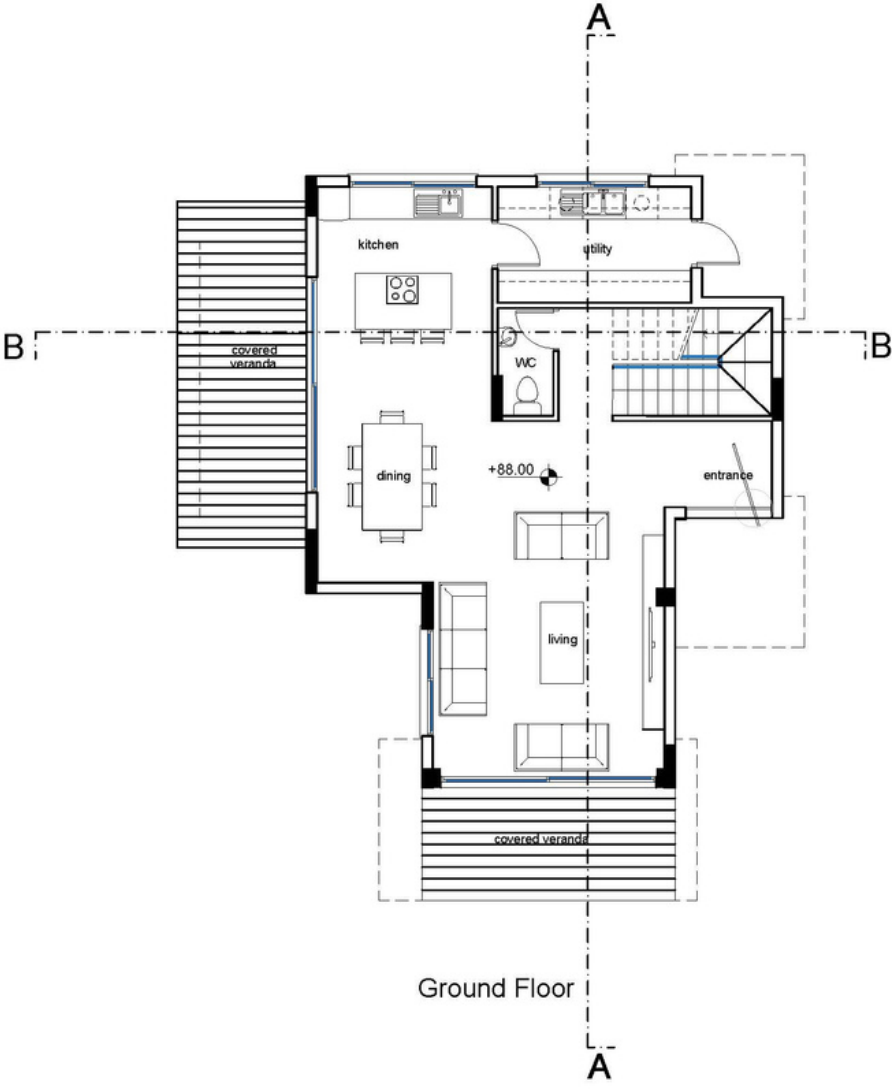


MASTER PLAN

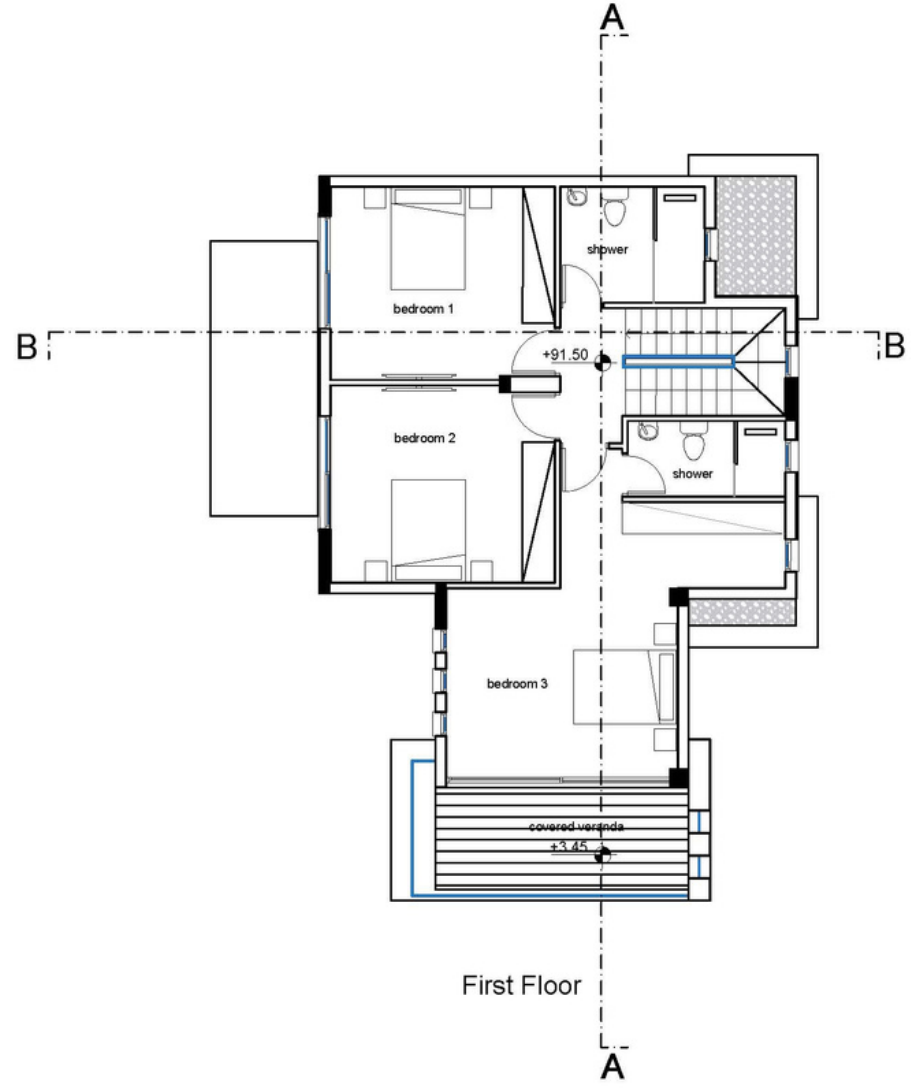


FLOOR PLAN

Villa 1-3

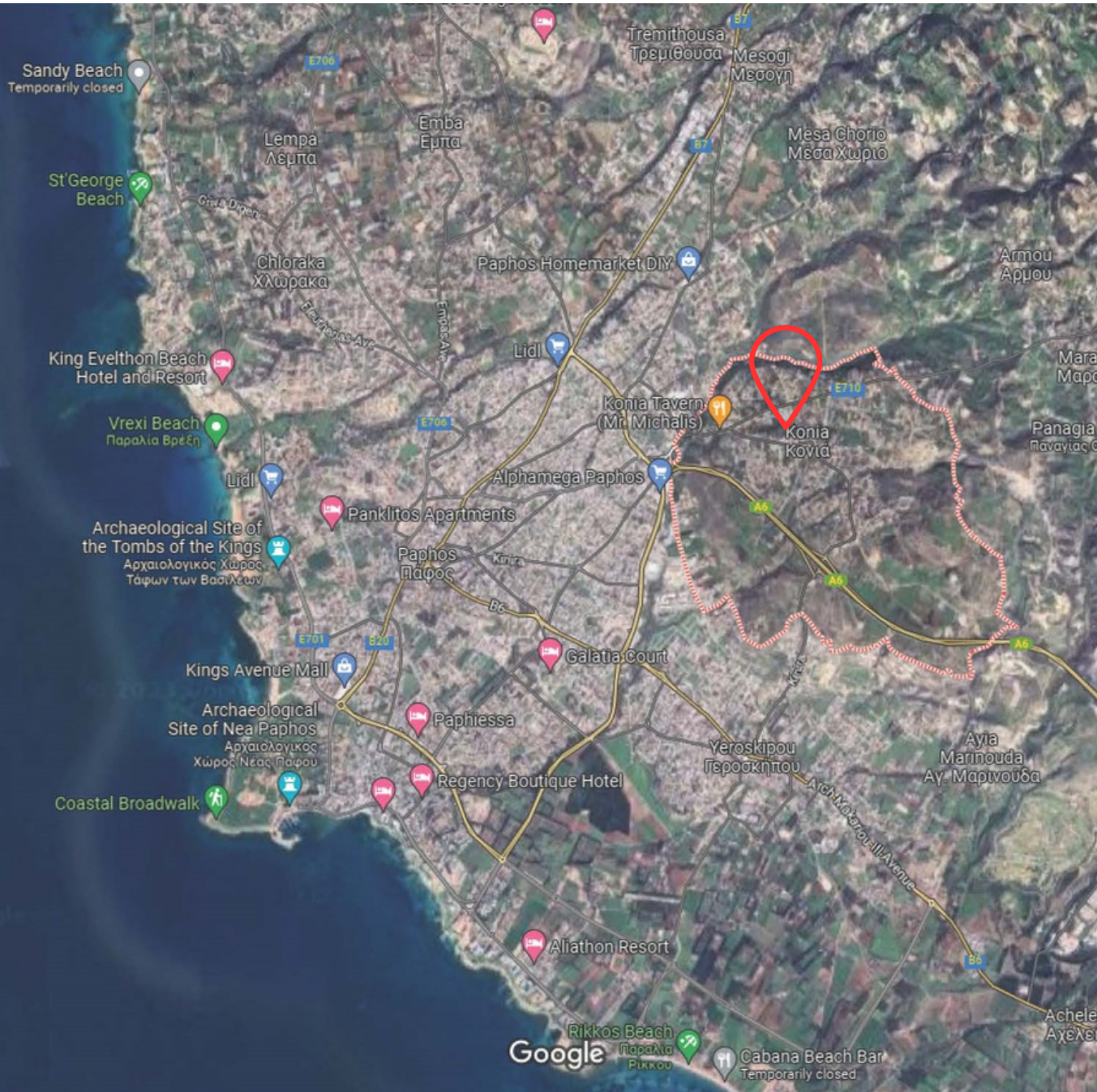


Ground Floor



First Floor

LOCATION



CITY CENTER
1KM



BEACH
5KM



AIRPORT
15KM



RESTAURANT
2KM



SUPERMARKET
5KM



SCHOOL
7KM



GOLF COURSE
10KM

KONIA PANTHEA



SPECIFICATIONS

- *3- 4 Bedrooms*
- *Private swimming pool (optional)*
- *Private roof garden*
- *Contemporary Architectural Design*
- *Upgraded thermal aluminium series*
- *Tailor made kitchen design*
- *Wide range of imported ceramic tiles and marbles*
- *Branded sanitary ware*
- *Provisions for central heating and A/C*
- *Energy efficiency class A*