

GEMINI



KISSONERGA

KISSONERGA

Kissonerga is a charming village located on the sunny shores of Cyprus, offering a delightful mix of attractions for both tourists and residents.

Kissonerga boasts beautiful beaches that are perfect for relaxation and water activities. The golden sands and crystal-clear waters make it an ideal destination for sunbathing, swimming, and water sports.

You can also explore local restaurants and tavernas to savour a wide range of Mediterranean dishes. Tailored to cater to both those seeking a peaceful retreat and those looking for a vibrant community to be a part of. Whether you want a serene spot to unwind or an active social life, Kissonerga offers a wonderful blend of vacation attractions and comfortable permanent living options.

Overall, Kissonerga is a fantastic destination for anyone looking to enjoy the beauty of Cyprus, soak in its rich history and culture, and savour delicious local cuisine. Whether you're visiting for a vacation or considering it as a place to call home, Kissonerga has something to offer to all who visit.



GEMINI

This collection of 15 2-storey houses offers a range of 3 bedroom residences, each boasting 3 bathrooms.

The properties feature optional swimming pools, adding a touch of luxury to the serene landscape.

The modern architectural approach blends the project seamlessly with the natural environment, creating spacious and efficient interior areas. The location is exceptional, providing unobstructed views of Pafos and the Mediterranean Sea from every single house. The village center is only 2 minutes away, offering convenience without compromising tranquility.

Whether you seek an investment opportunity or your private residence, "GEMINI" is the ideal choice.

Embrace a modern lifestyle that harmoniously integrates with the natural beauty of Cyprus, promising not just a home but an exclusive retreat with breathtaking views and easy access to village amenities.











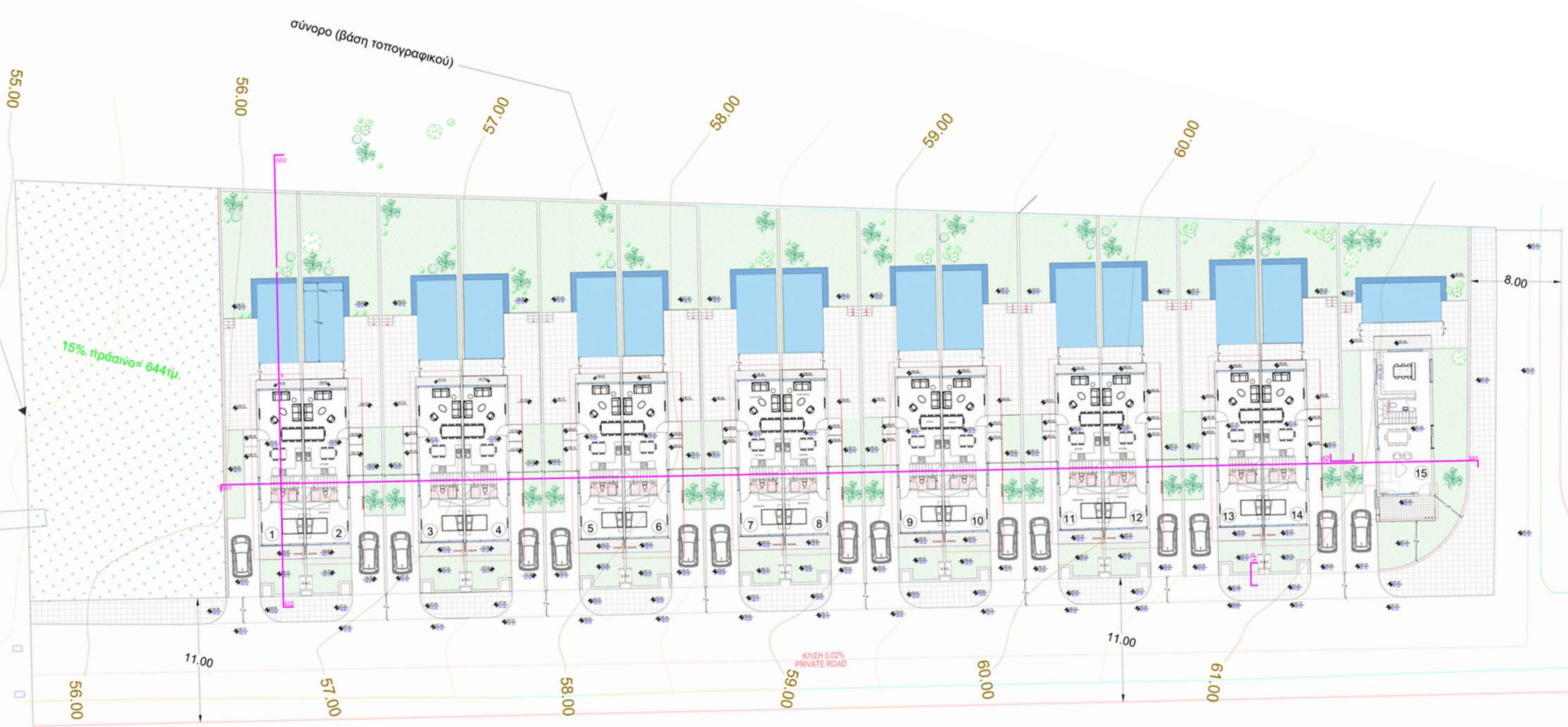






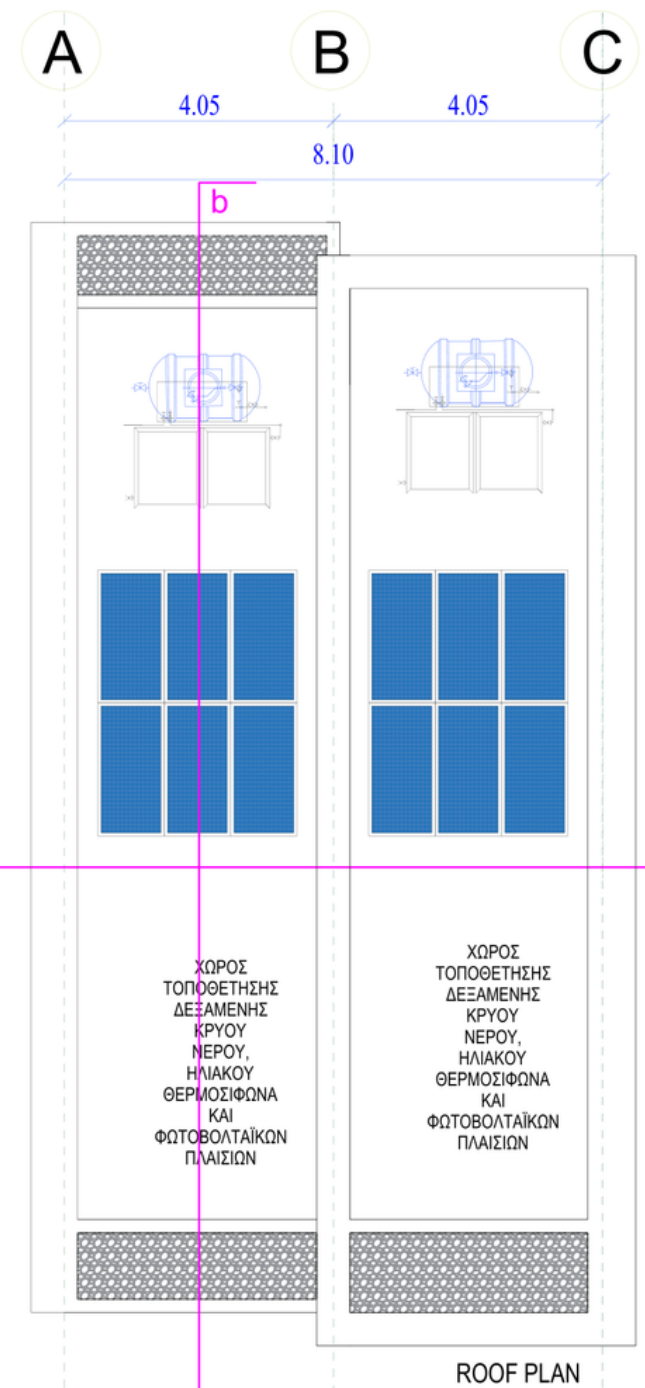
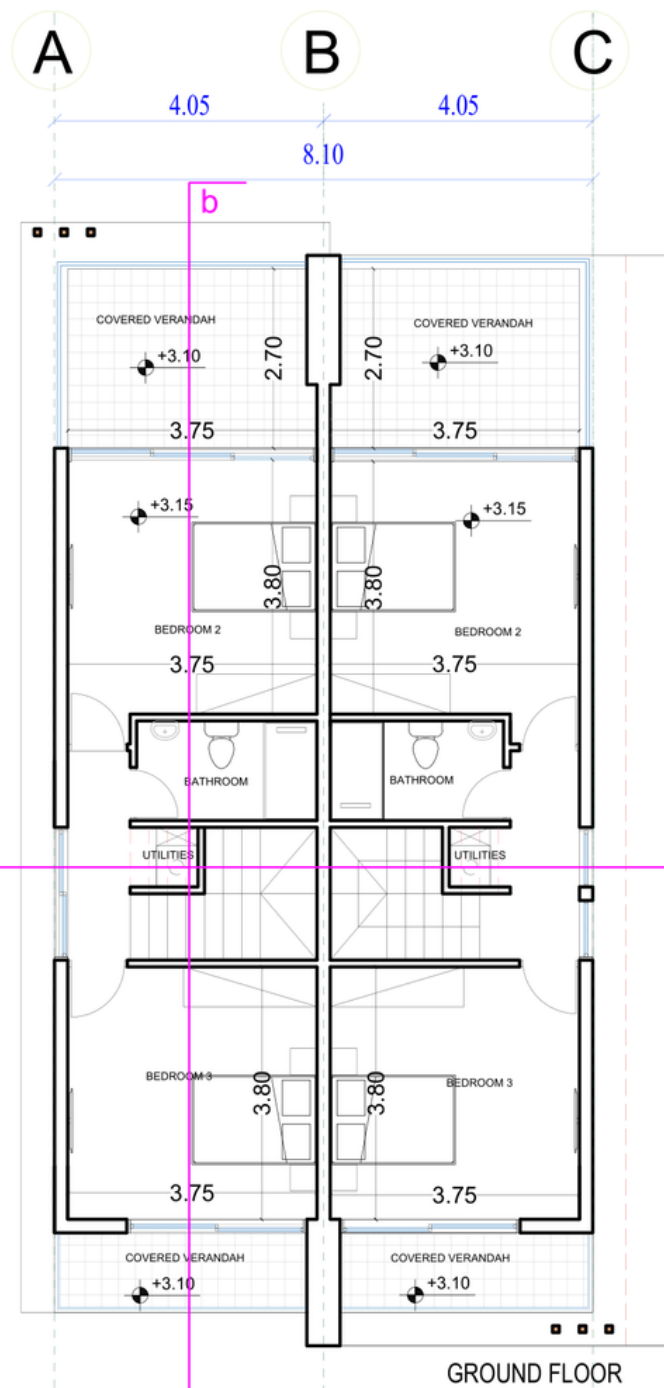
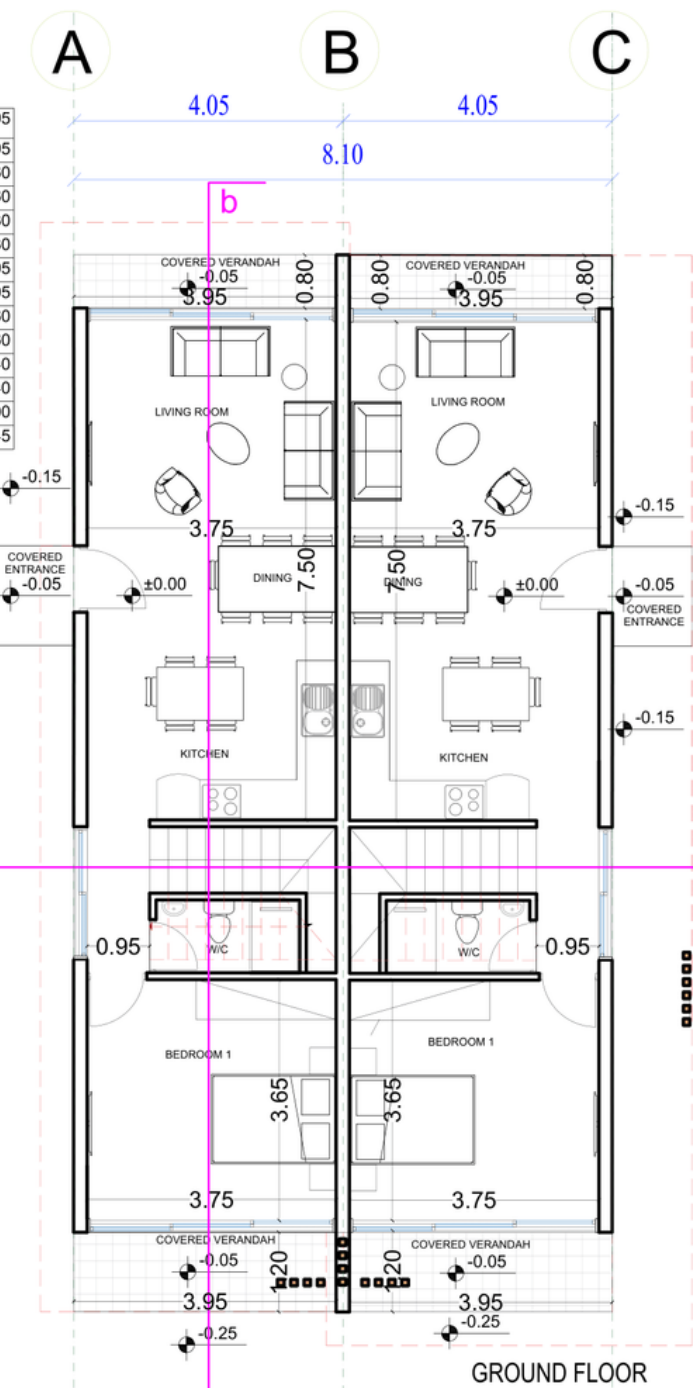


MASTER PLAN



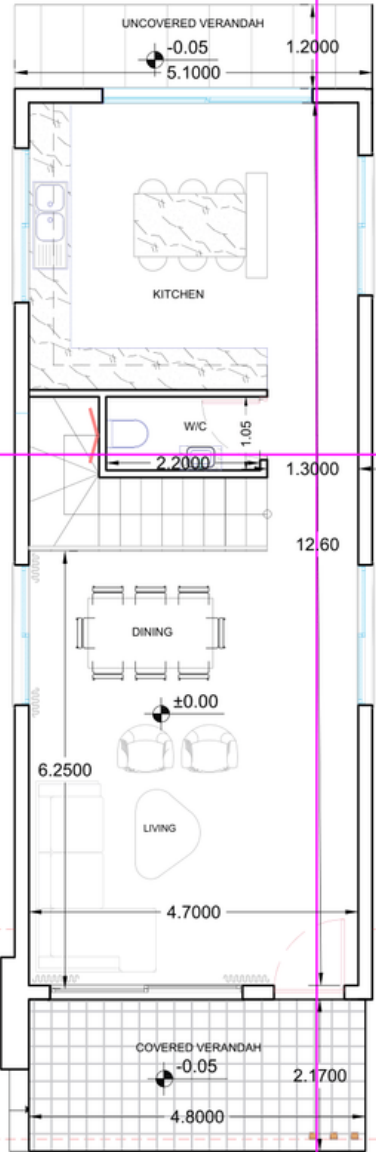
FLOOR PLANS

House 1-14

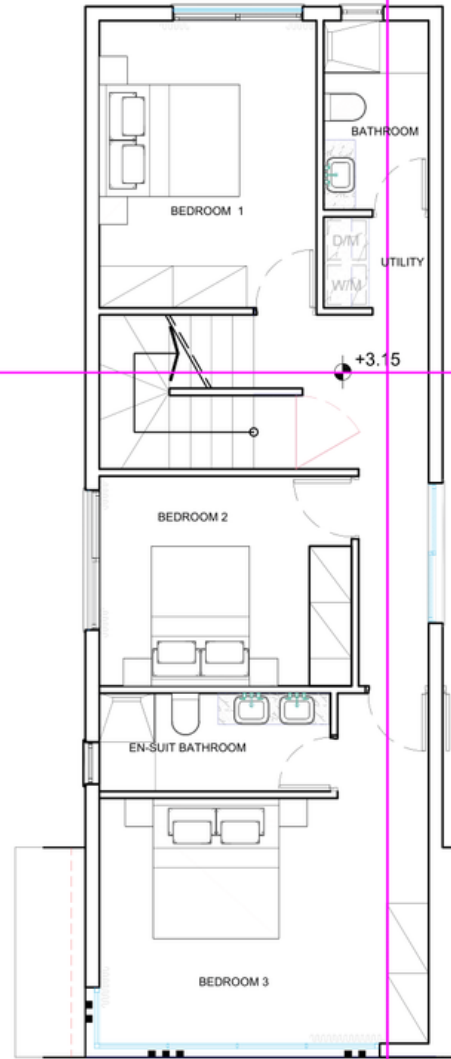


FLOOR PLANS

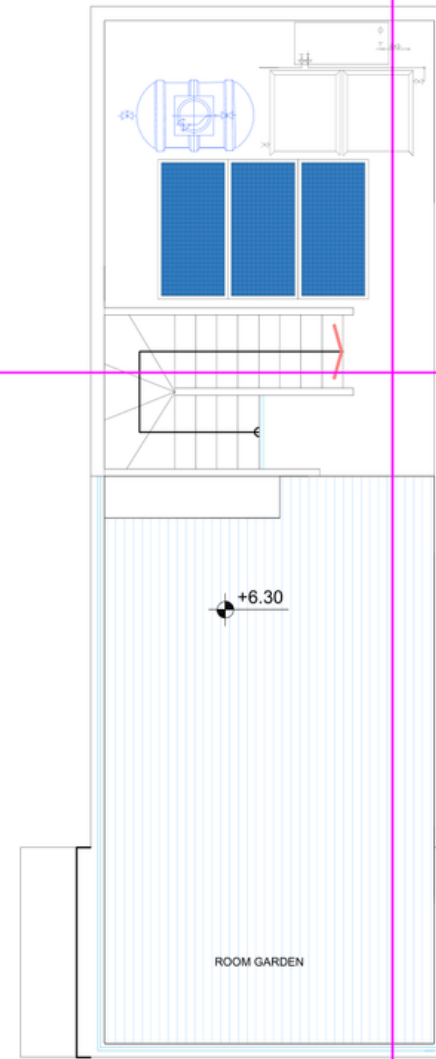
House 15



GROUND FLOOR



FIRST FLOOR



ROOF

LOCATION



CITY CENTER
1KM



BEACH
500mtr



AIRPORT
20KM



RESTAURANT
100 MTRS



SUPERMARKET
1KM



SCHOOL
1KM



GOLF
COURSE
10KM

GEMINI SPECIFICATIONS

- *15 – 3 Bedroom Villas*
- *Contemporary Architectural Design*
- *Upgraded thermal aluminium series*
- *Tailor made kitchen design*
- *Wide range of imported ceramic tiles and marbles*
- *Branded sanitary ware*
- *Provisions for central heating and A/C*
- *Detached properties*
- *Unobstructed Sea View*
- *Energy saving designed property*
- *Optional Swimming pool*

