



**Seaside living, redefined**



# Kato Paphos

Nestled along the stunning coastline of Paphos, Cyprus, Kato Paphos offers an unparalleled coastal living experience, seamlessly blending timeless charm with modern convenience.

With captivating vistas of the azure Mediterranean Sea, Kato Paphos provides a serene escape just moments away from urban amenities. Residents revel in the laid-back coastal lifestyle while having effortless access to the vibrant heart of Paphos, a mere stone's throw away. Moreover, the crystalline waters of the Mediterranean invite residents to immerse themselves in coastal delights and aquatic adventures.

Moreover, Kato Paphos boasts excellent connectivity, with Paphos International Airport conveniently located nearby. This accessibility makes it an ideal haven for those seeking a harmonious fusion of coastal tranquility and contemporary urban living.







**Seaside living, redefined**

Introducing "MARE Residences," an exquisite construction project located just 200 meters from the captivating shores of Kato Paphos. Nestled in this coastal paradise, "MARE" offers 37 detached and semi detached luxurious villas, each boasting three bedrooms, epitomizing modern coastal living at its finest.

Indulge in the epitome of luxury with "MARE Residences," where every detail is meticulously crafted to enhance your lifestyle. Dive into the refreshing overflow swimming pools, and bask in the cool breeze atop your private roof gardens.

Embrace the tranquility of coastal living while enjoying easy access to essential amenities and services. "MARE Residences" is strategically situated, offering residents quick access to schools, shops, and leisure facilities, making it an ideal haven for families seeking both luxury and practicality.

Welcome to "MARE Residences," where modern luxury meets coastal charm, creating a lifestyle beyond compare in the heart of Kato Paphos.









































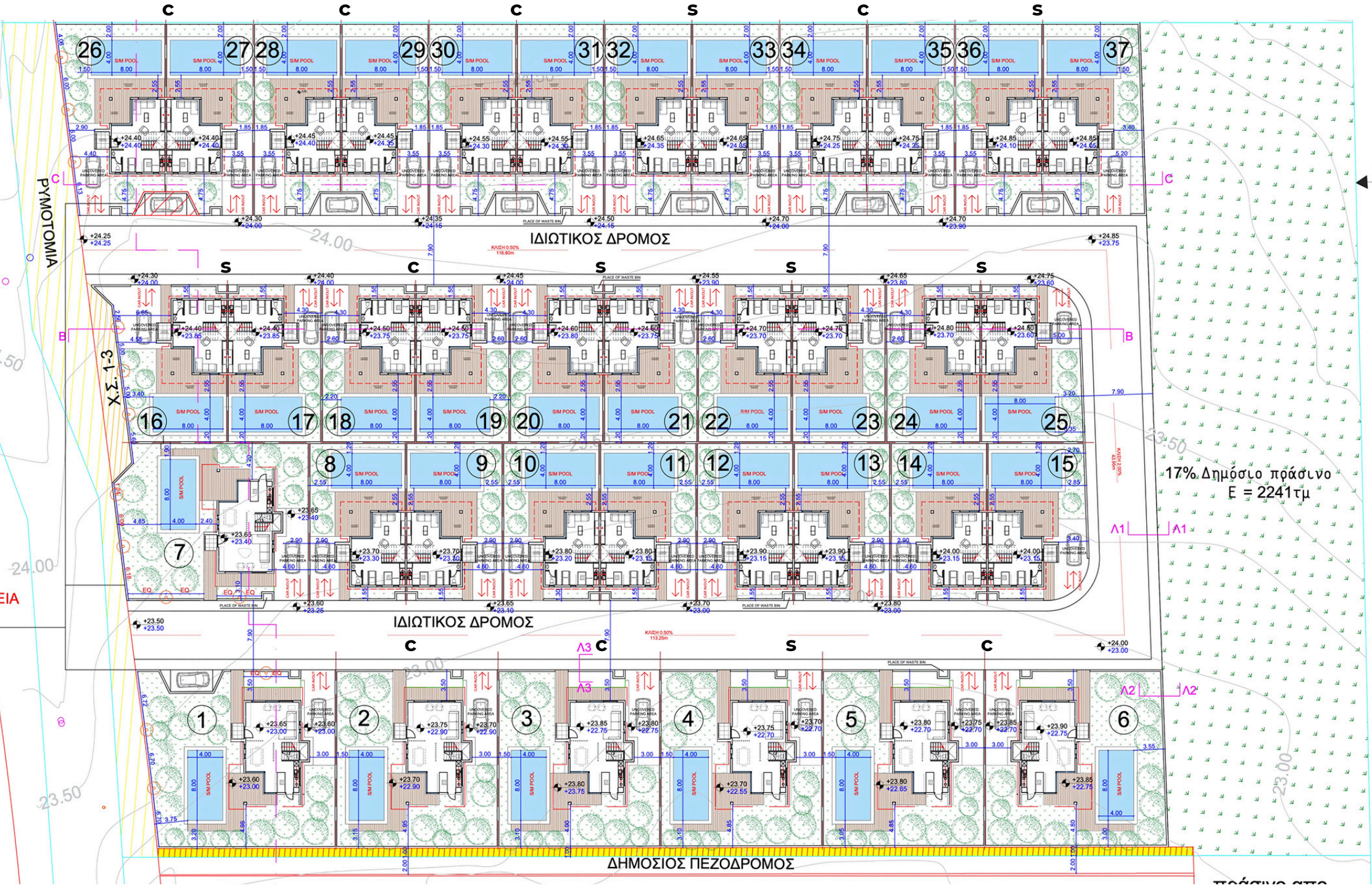








# MASTER PLAN

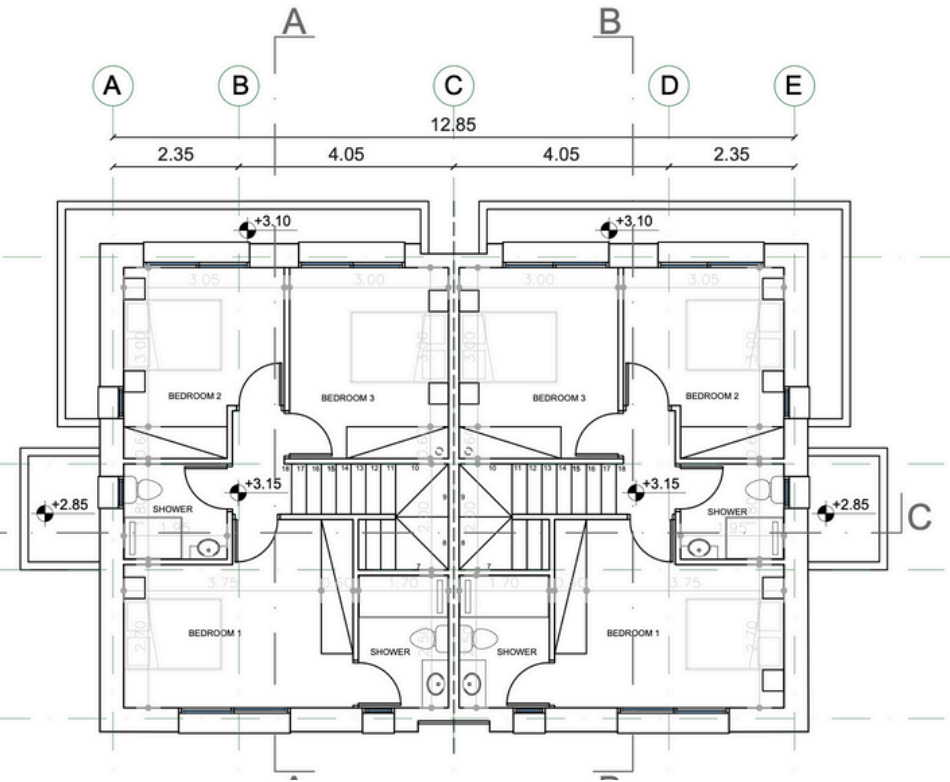
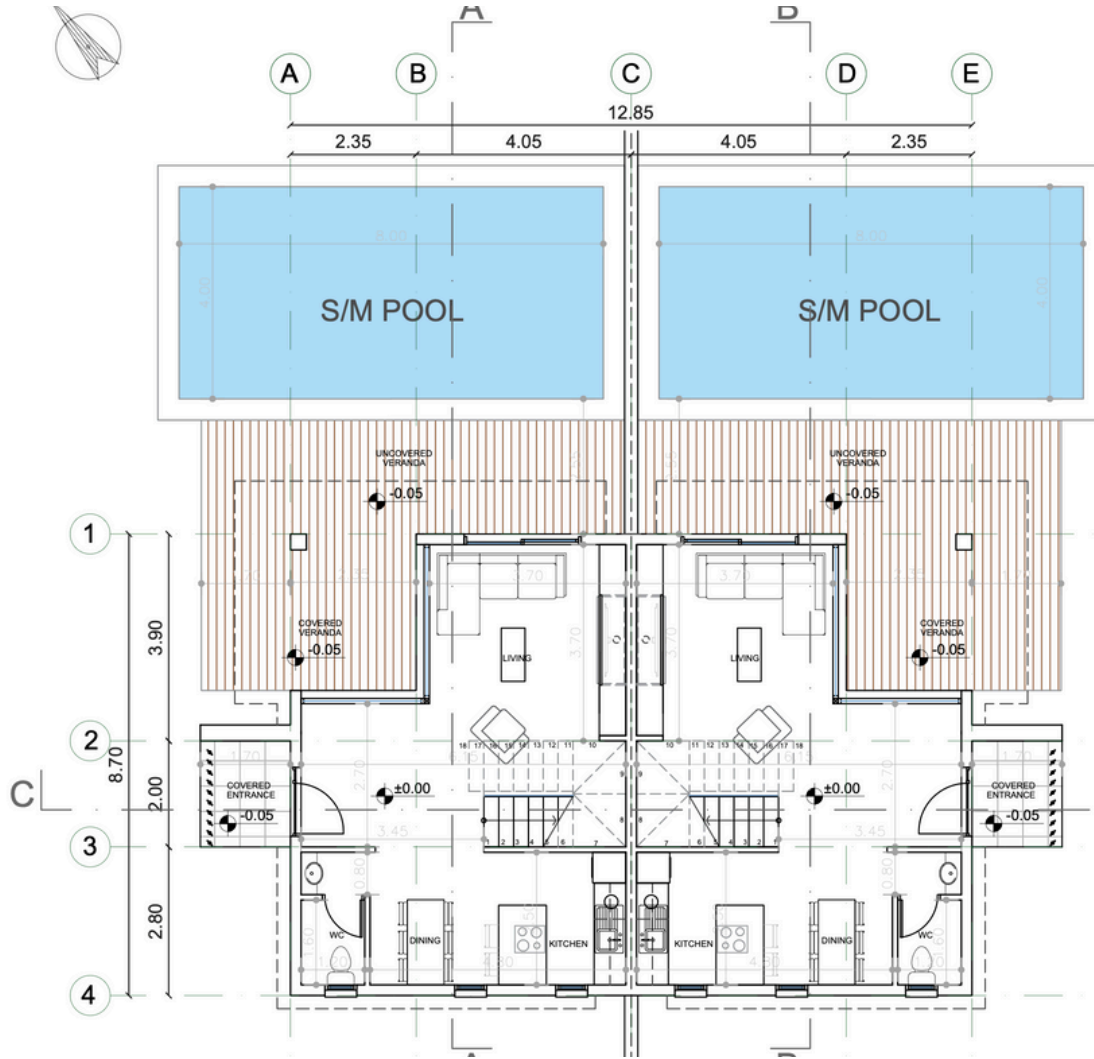


17% Δημόσιο πράσινο  
 $E = 2241\tau\mu$

ΠΡΟΣΤΑΣΙΑ



# FLOOR PLAN





# LOCATION



CITY CENTER  
4KM



BEACH  
200M



AIRPORT  
15KM



RESTAURANT  
100 M



SUPERMARKET  
800 M



SCHOOL  
3KM



GOLF COURSE  
7KM





Seaside living, **redefined**

## SPECIFICATIONS

### *37 Detached & Semi Detached 3 -Bedroom Villas*

- *Energy efficiency class "A"*
- *Private swimming pool*
- *Security System with cameras*
- *Electric Car charger*
- *Generous plots*
- *Sea & Mountain Views*
- *Contemporary Architectural Design*
- *Upgraded thermal aluminium series*
- *Tailor made kitchen design*
- *Wide range of imported ceramic tiles and marbles*
- *Branded sanitary ware*

